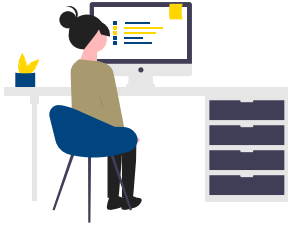


Name:

Fullerton College ID: @

Date:



## GROUP ADVISING COUNSELING VIDEO SERIES WORKSHEET

Fill in the blanks on this worksheet as you watch  
the 7 Part Group Advising Video Series.



### VIDEO 1 - COUNSELING GROUP ADVISING: INTRODUCTION

The best time to book an appointment with a counselor in the fall semester is \_\_\_\_\_

The best time to book an appointment with a counselor in the spring semester is \_\_\_\_\_

### VIDEO 2 - GETTING READY TO PLAN YOUR FIRST SEMESTER

*(Please note: It is highly recommended to bring your high school transcript when meeting with a counselor).*

What is your Educational Goal at Fullerton College?

Associate's Degree

Earning a Certificate

Personal Enrichment

Transferring to a University \_\_\_\_\_

*(Which Universities are you interested in transferring to?)*

What is your intended Major/Career? \_\_\_\_\_

Have you earned college credit from any of the following?

AP/IB Exams

Dual Enrollment Courses

ROP Credit

Credit for Prior Learning

CLEP Exam

A degree from another country

### VIDEO 3 - BUILDING YOUR FIRST SEMESTER EDUCATION PLAN

The measures used to help determine your placement in Math, English and ESL include:

1. \_\_\_\_\_ 2. \_\_\_\_\_ 3. \_\_\_\_\_

You will be placed in a math class based on the following three factors:

1. \_\_\_\_\_ 2. \_\_\_\_\_ 3. \_\_\_\_\_

What does "GE" stand for in the phrase "GE Classes"? \_\_\_\_\_

Who will guide you to the appropriate GE Pattern for your major? \_\_\_\_\_

**VIDEO 4 - NEXT STEPS AFTER YOUR COUNSELING SESSION**

Resources you will need to have when preparing for registration include:

- 1. \_\_\_\_\_
- 2. \_\_\_\_\_
- 3. \_\_\_\_\_
- 4. \_\_\_\_\_

Where can you look-up your Registration Appointment Date? \_\_\_\_\_

Your Registration Date is also emailed to you by: \_\_\_\_\_

What are three things you should do when preparing for class registration?

- 1. \_\_\_\_\_
- 2. \_\_\_\_\_
- 3. \_\_\_\_\_

Check out Registration Resources Here:



If you have any registration error messages, which office should you contact? \_\_\_\_\_

What is their phone number? \_\_\_\_\_

If you have any trouble accessing MyGateway, which office should you contact? \_\_\_\_\_

**VIDEO 5 - TIPS FOR SUCCESS**

What are the Best things to do to be prepared for the first day?

- 1. \_\_\_\_\_
- 2. \_\_\_\_\_
- 3. \_\_\_\_\_

Visit the Fullerton College Map Here:



What are some keys to Success? \_\_\_\_\_

**VIDEO 6 - STUDENT SERVICES AT FULLERTON COLLEGE**

Different types of support available to students include :

- 1. \_\_\_\_\_
- 2. \_\_\_\_\_
- 3. \_\_\_\_\_
- 4. \_\_\_\_\_

Find Student Services Resources Here:



**VIDEO 7 - COUNSELING GROUP ADVISING: CONCLUSION**

To schedule your New to College Group Advising (NSGA) appointment, call the Counseling Center (714) 992-7084 or book your appointment online using the link: <https://counseling.fullcoll.edu/>