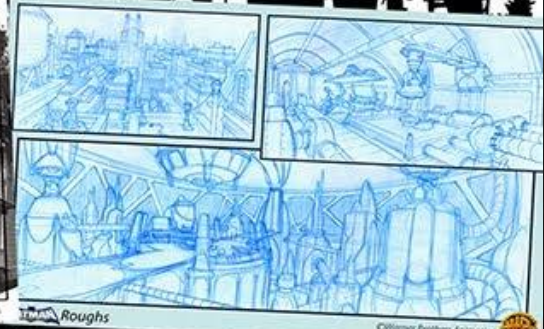
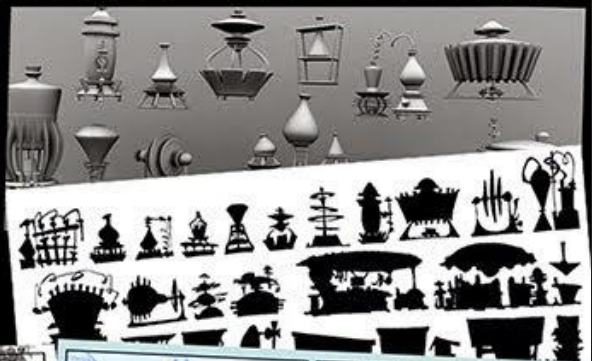
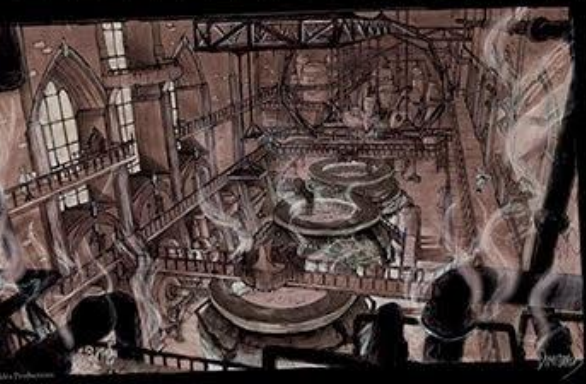




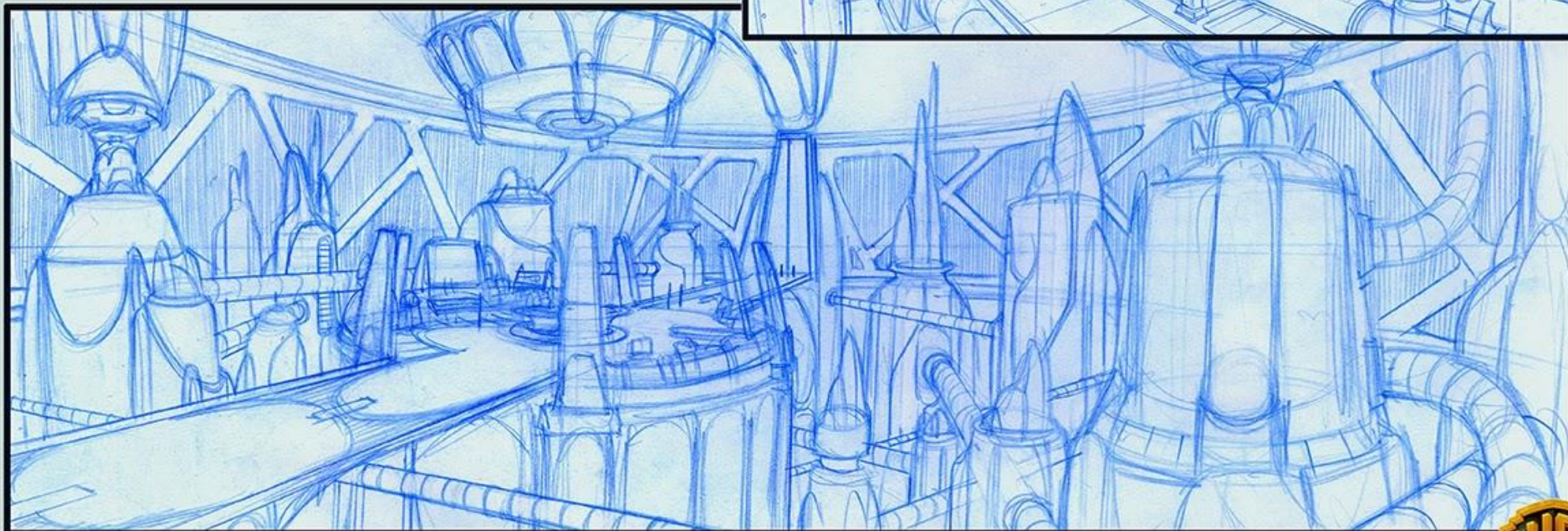
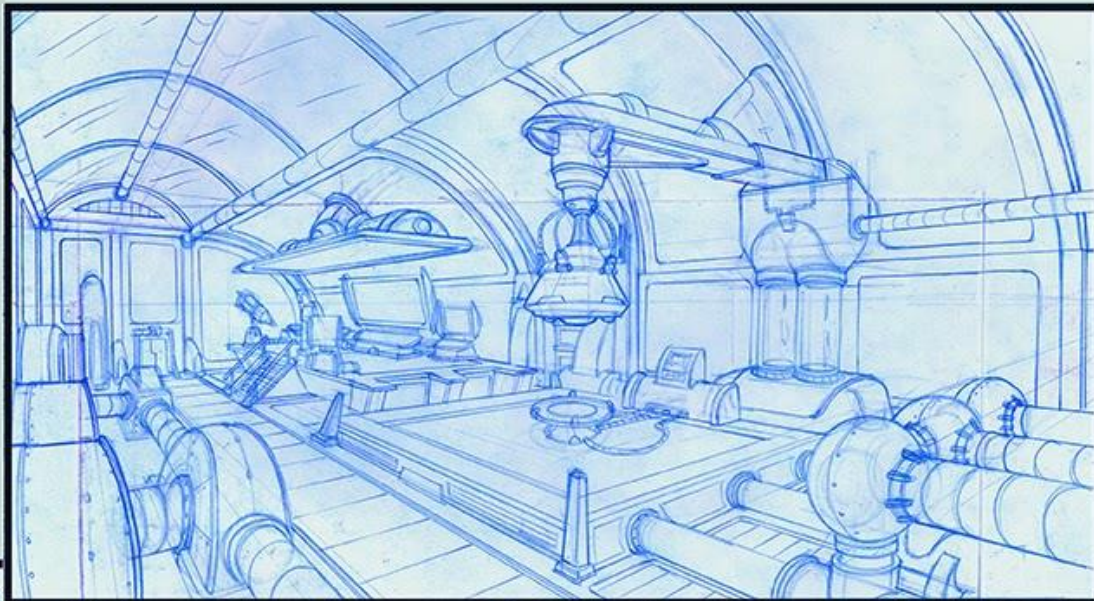
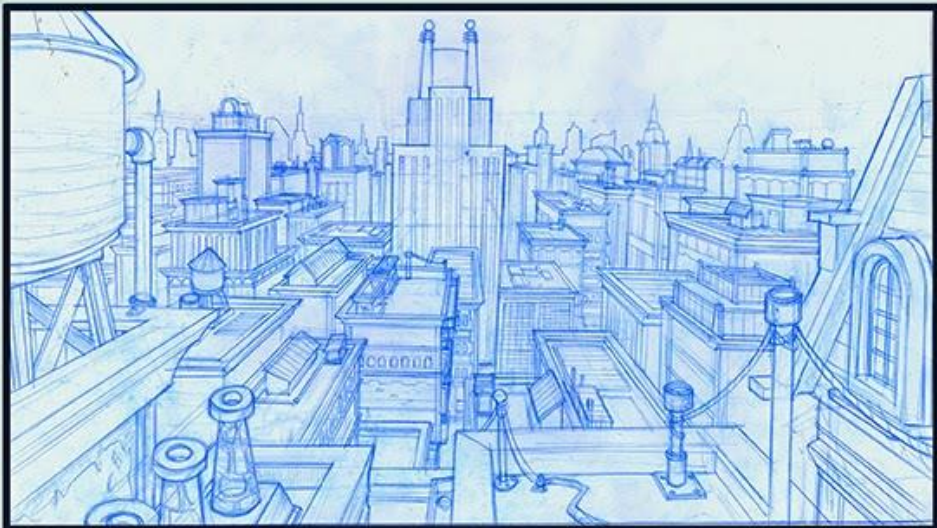
# COFFEE & CRAYONS

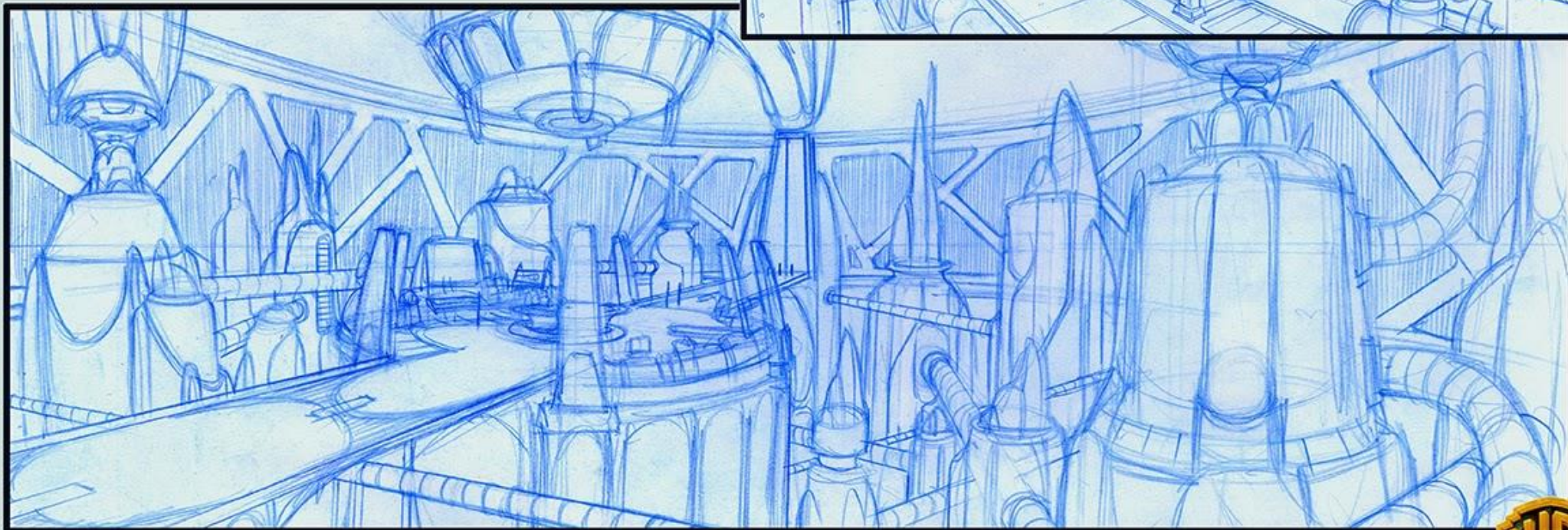
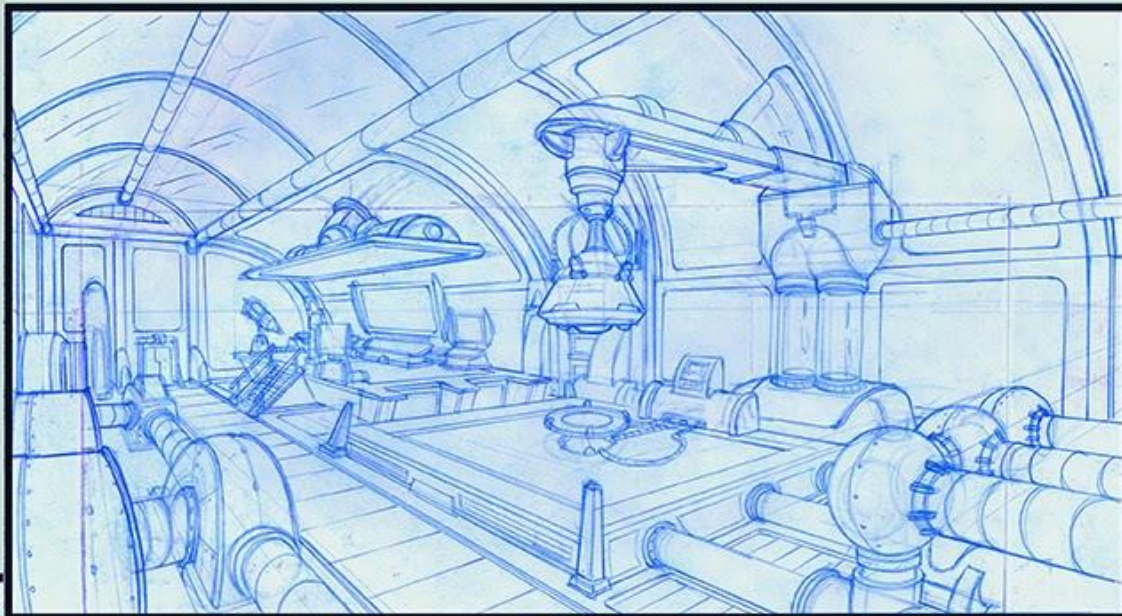
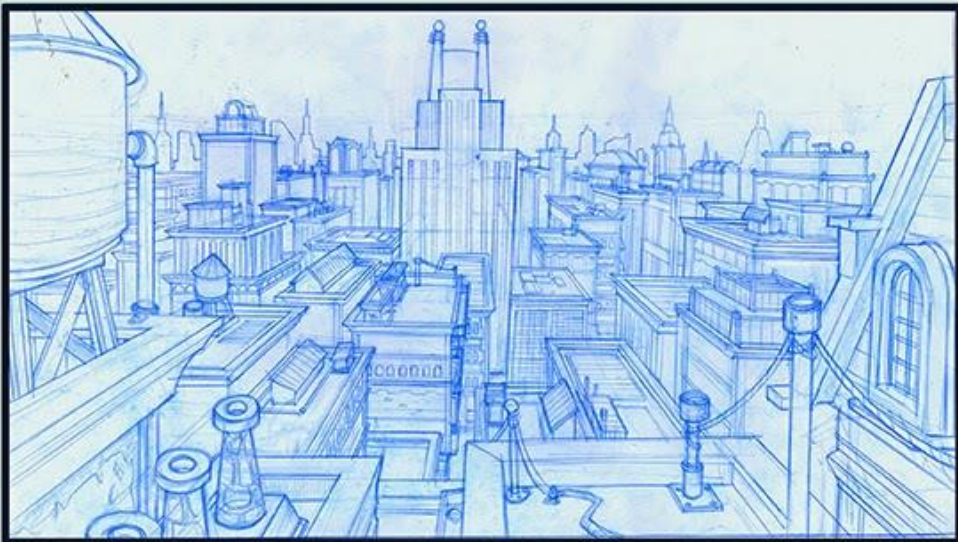
Fullerton College Digital Art

Entertainment Arts Program



ONLINE PORTFOLIO OF PHILIP DIMITRIADIS











Final Concept



Side View Rough Set



Front View Rough Set



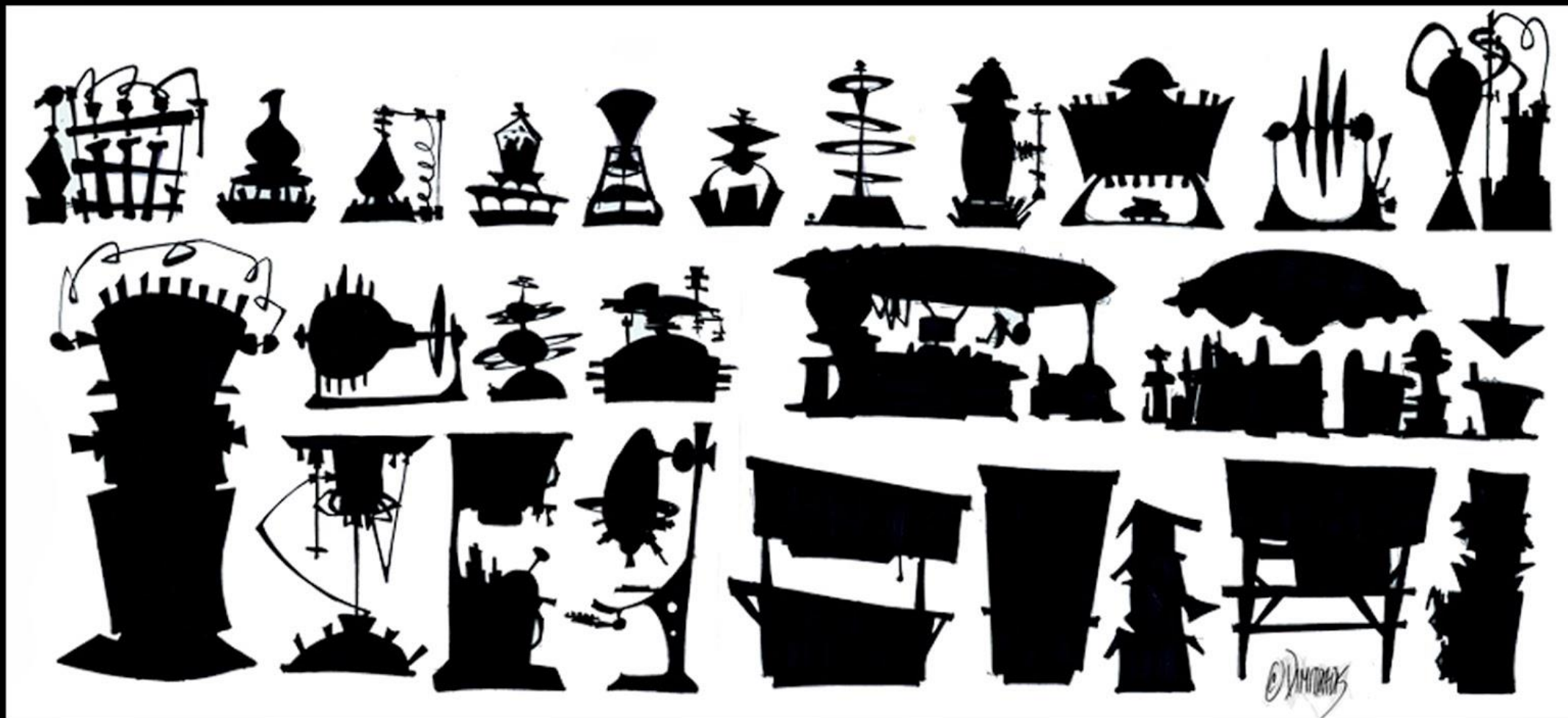
Another Concept



Maximum View Rough Set



Top View Rough Set

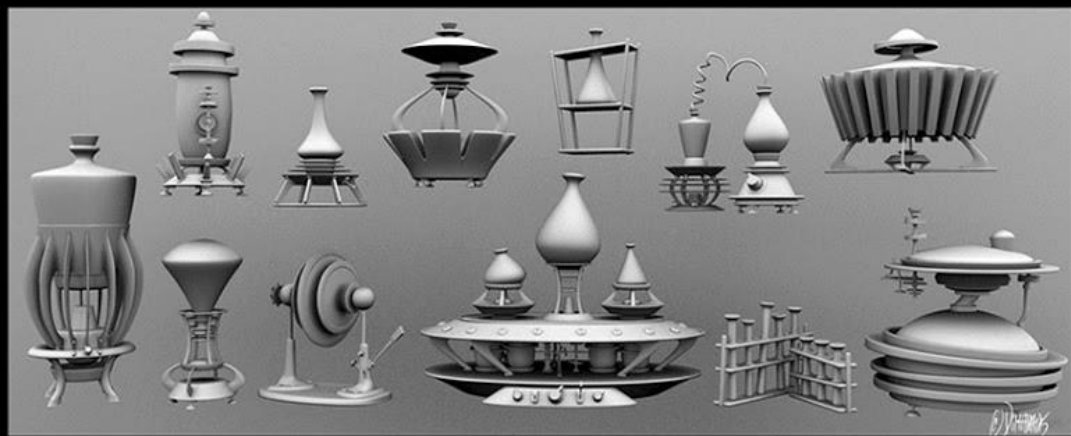
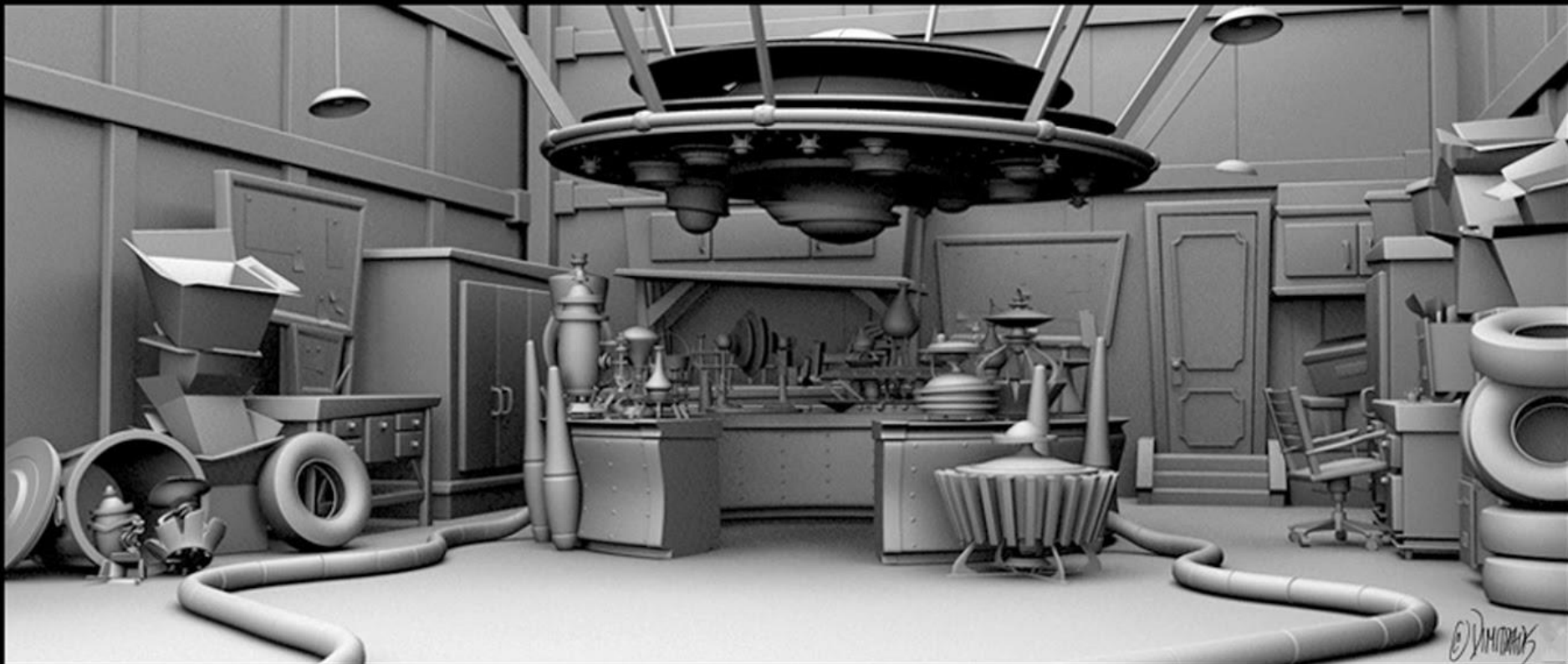


Silhouette Studies





Rough Layout Design



Finished Model



Light Study in Tone



## Staging and Story Set Up

# Foundations for Entertainment Arts & Illustration

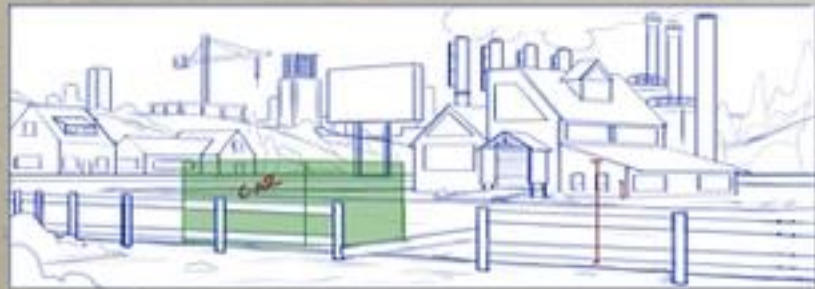
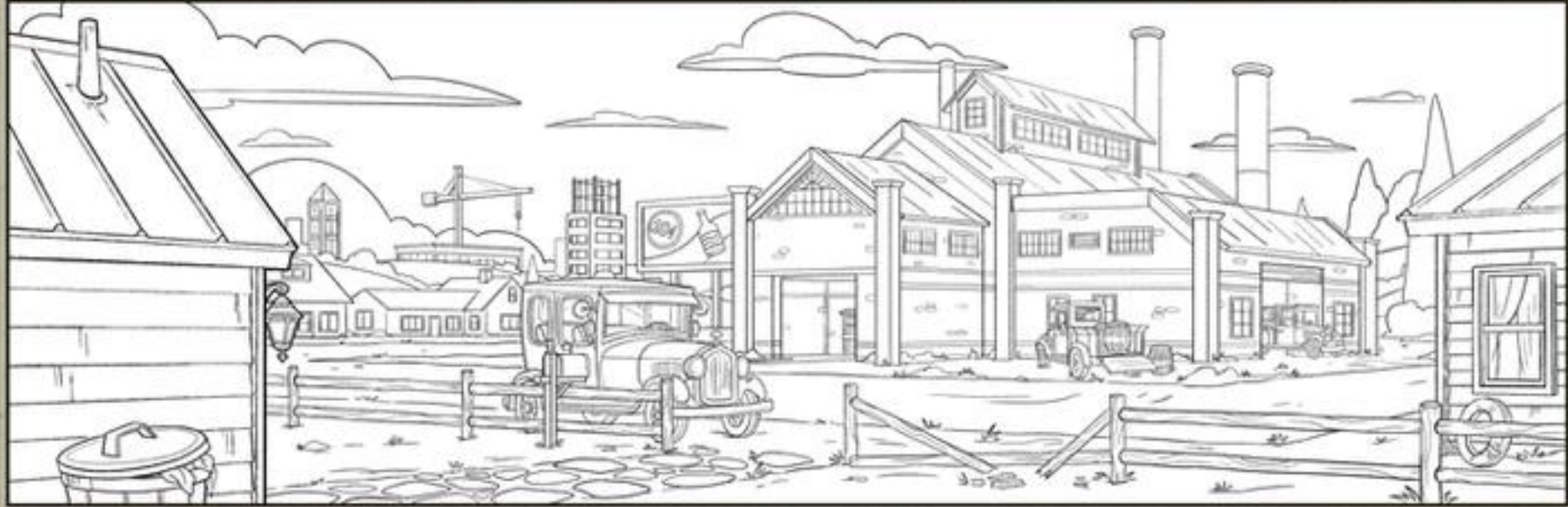
-Art 137 Basic Drawing for Entertainment Arts

-Art 182 Basic Drawing

-ART 243 Applied Perspective

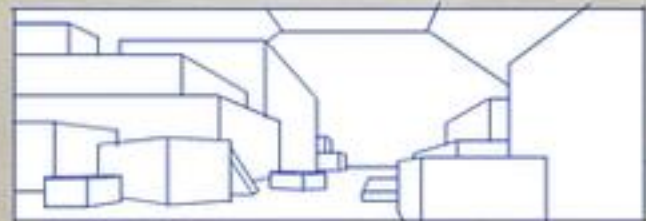
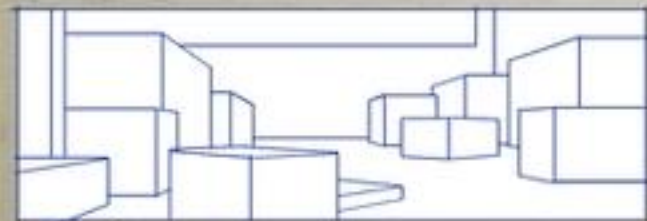
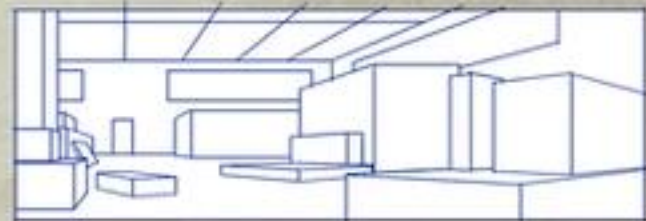
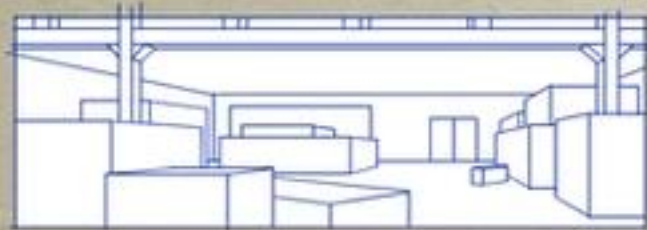
-Art 180 Rendering

-DART 135 Introduction to Digital Painting  
(DART 100 first if no Photoshop experience)



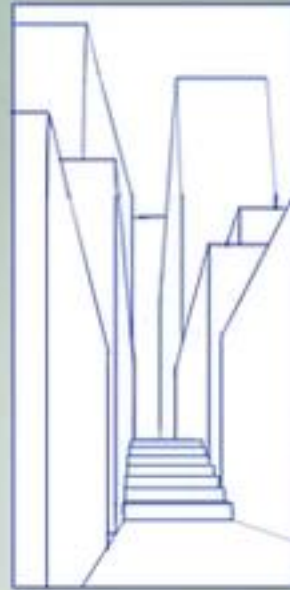
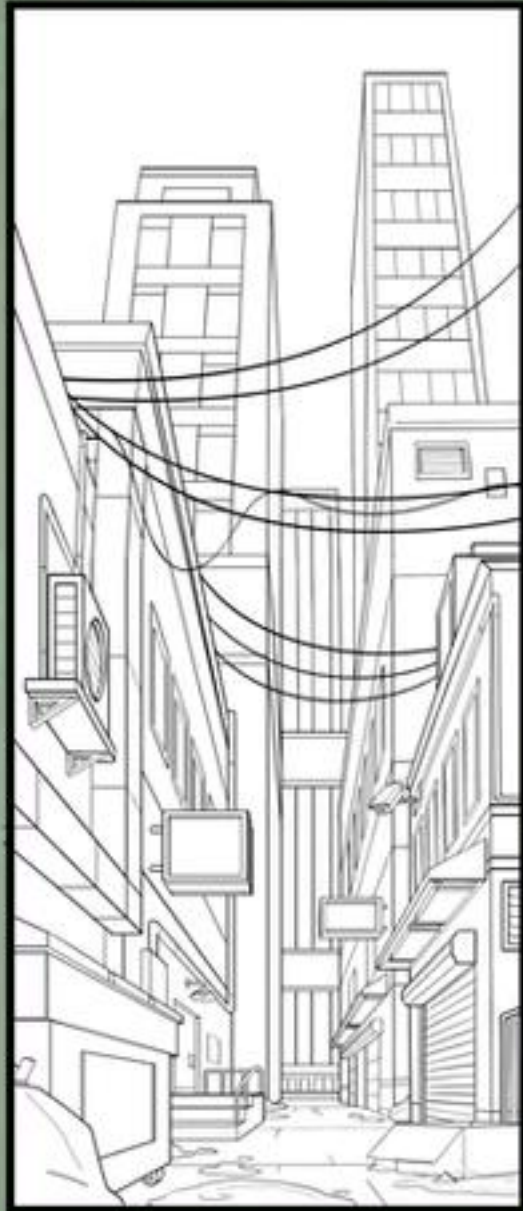
**Prohibition Era Warehouse  
Exterior**

Joel Zamudio



**Prohibition Era Warehouse  
Interior**

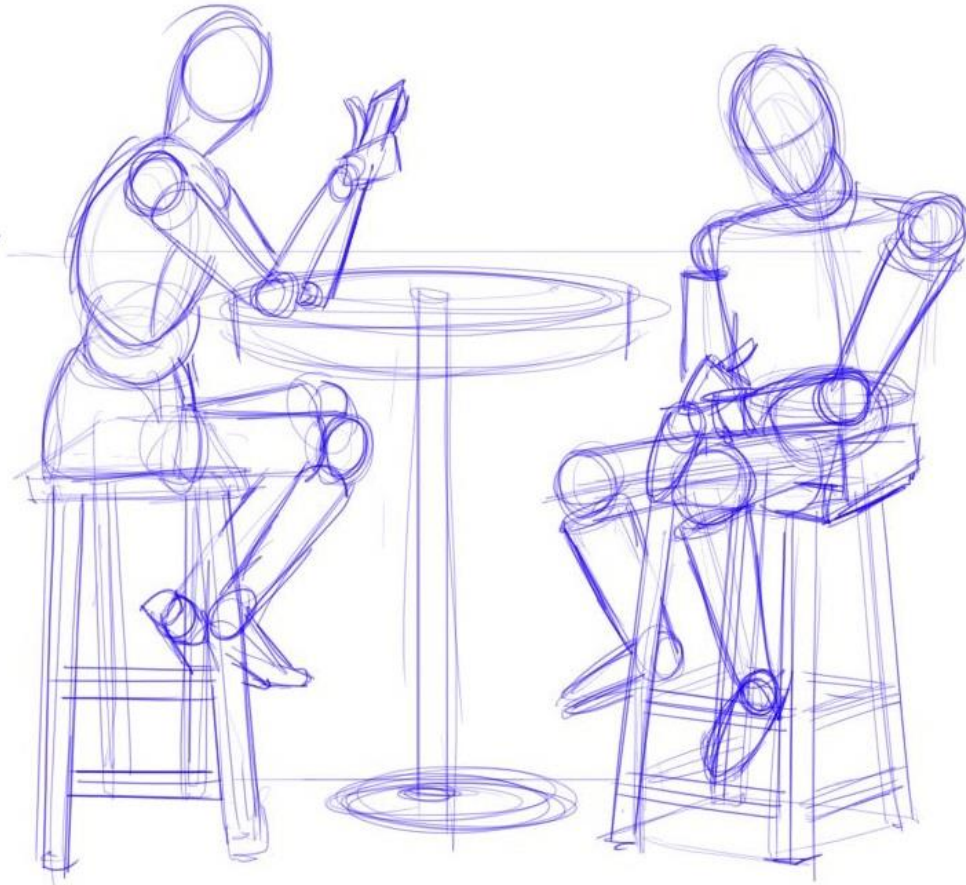
Joel Zamudio







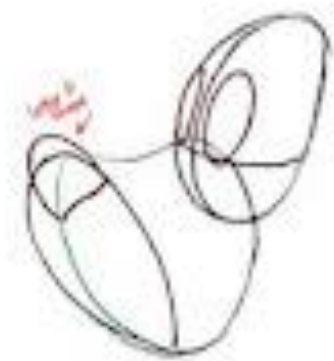
HL



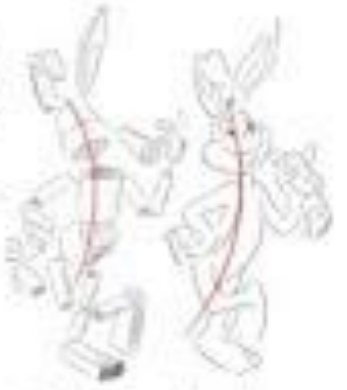
**CARTOON  
DOG FACE**

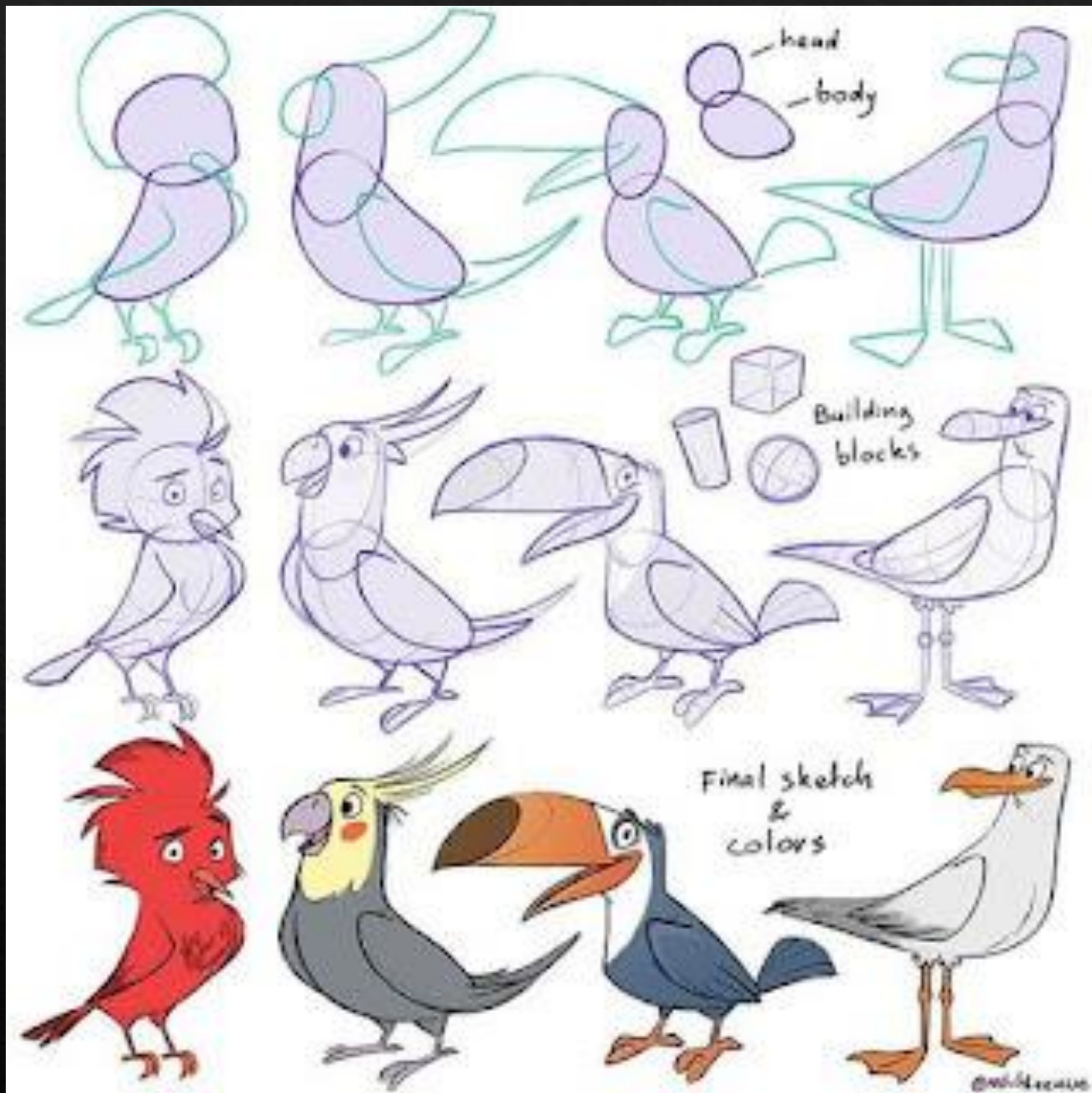


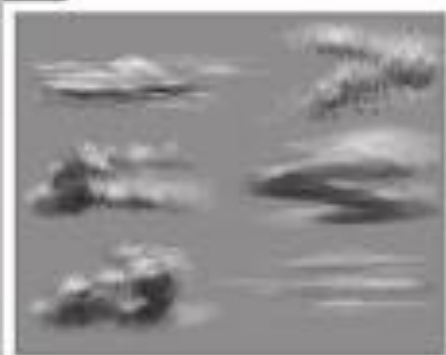
DRAWINGHOWTODRAW.COM



DRAWINGHOWTODRAW.COM







Clouds



Mountains



Rocks



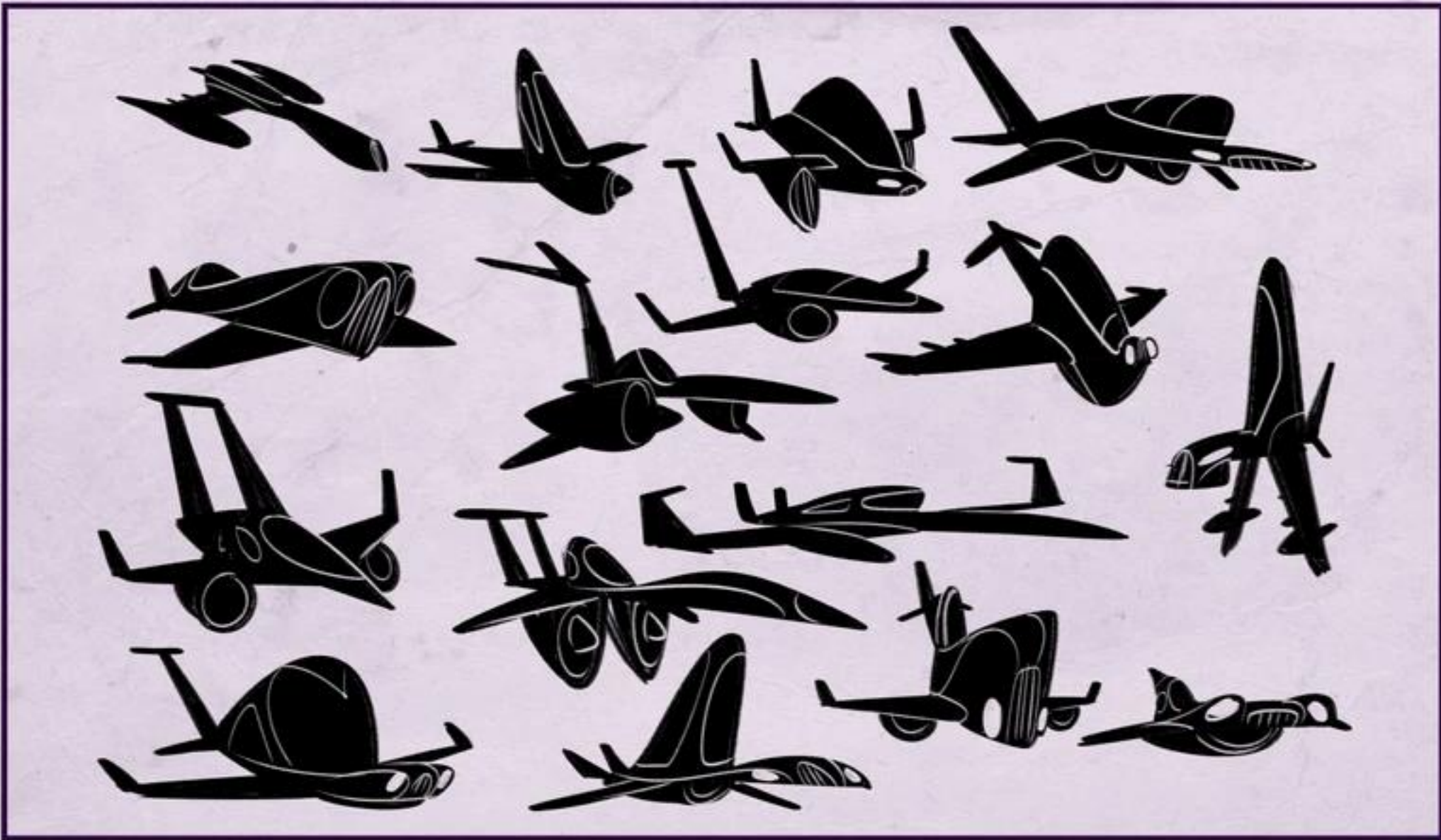
Vegetation



Water



# Prop Design



**Dracula's Jet** - Silhouette Ideation

Joel Zamudio



**Dracula's Car** - Silhouette Ideation

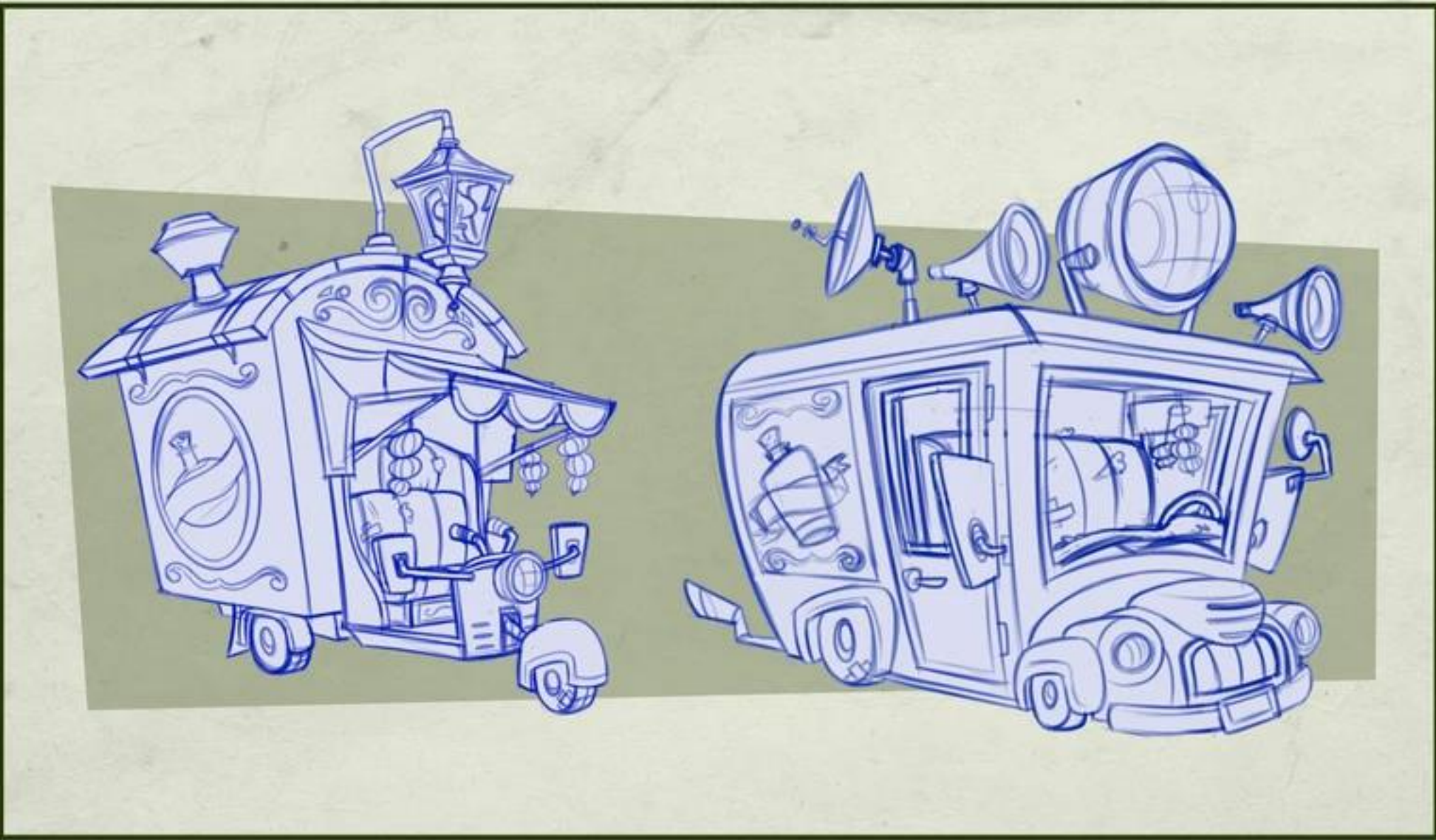
Joel Zamudio





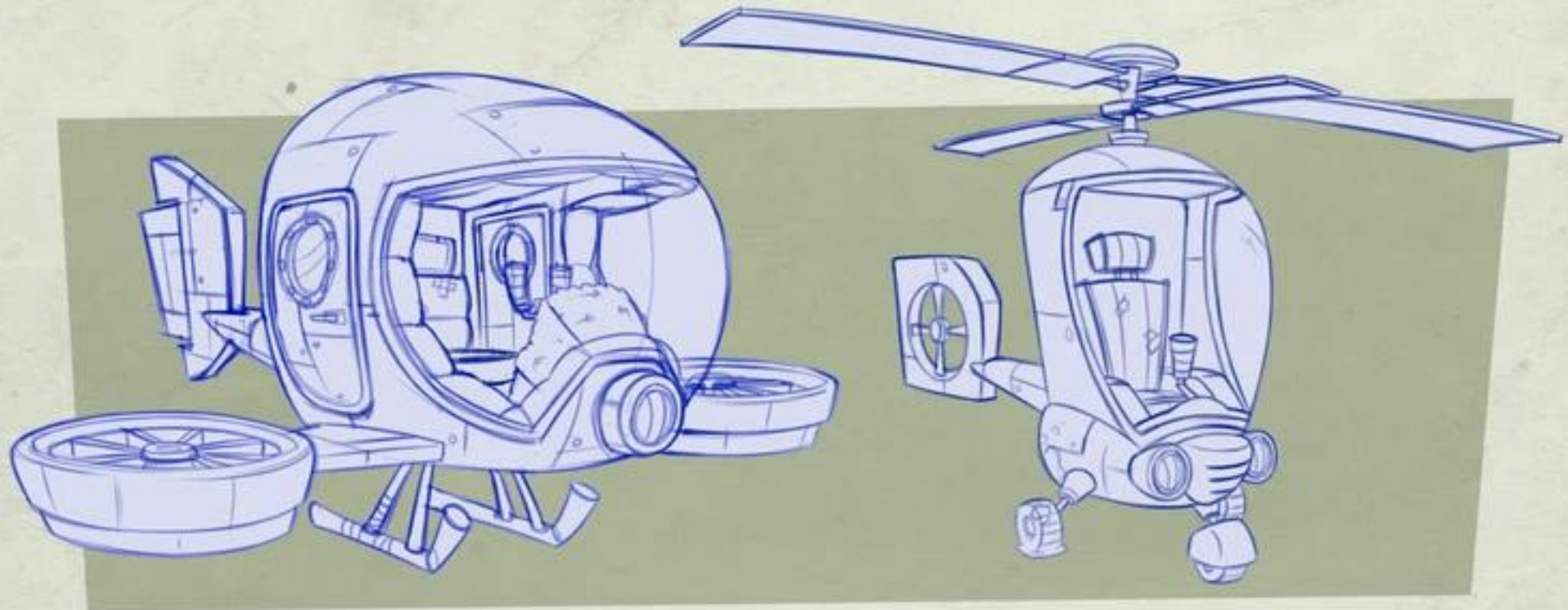
**Van Helsing's Helicopter** - Silhouette Ideation

Joel Zamudio



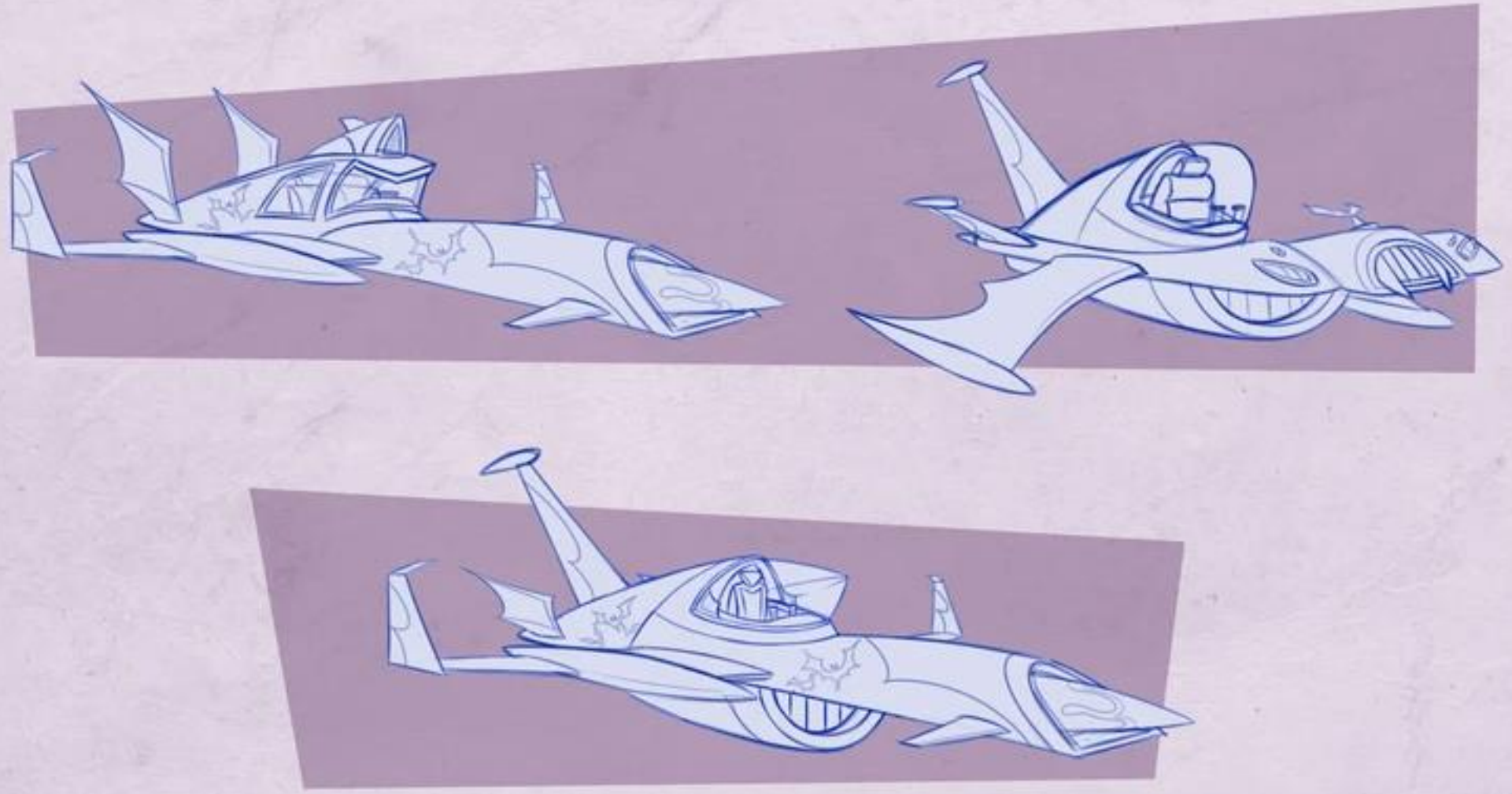
**Van Helsing's Car** - Design Sketches

Joel Zamudio



**Van Helsing's Helicopter** - Design Sketches

Joel Zamudio



**Dracula's Jet** - Design Sketches

Joel Zamudio



**Dracula's Jet** - Final Render

Joel Zamudio



**Dracula's Car** - Final Render

Joel Zamudio



Chipped Paint



Old Stained Interior Padding



Same Green and Yellow Paint



Sherpa Dashboard Cover



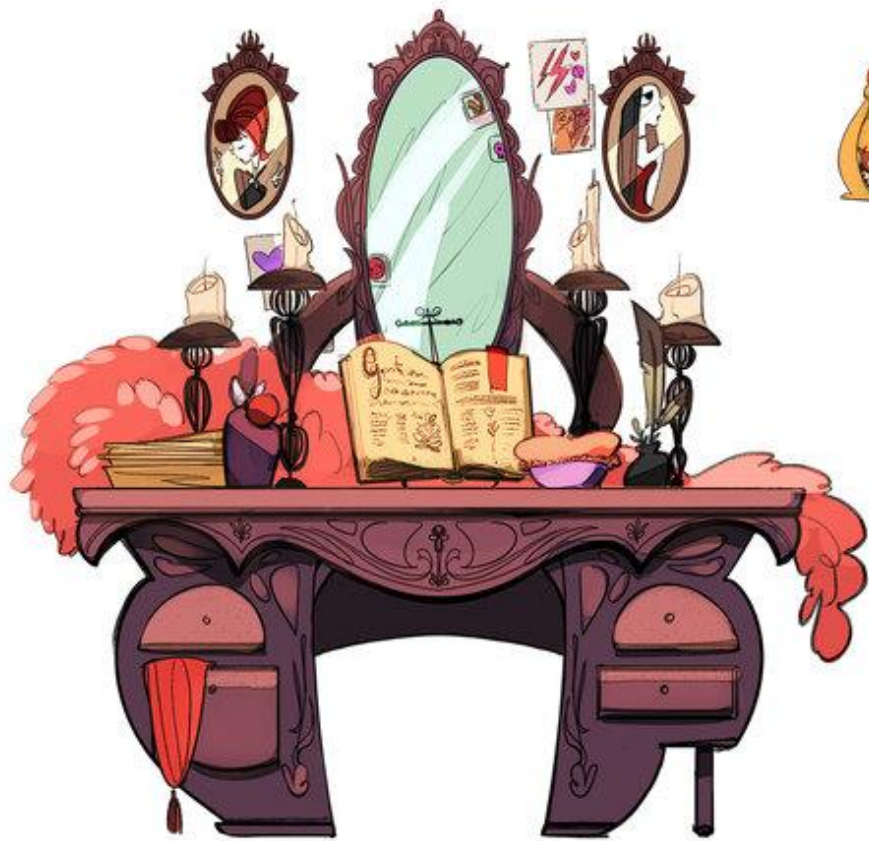
CREW TRANSPORT



JUNGLE SAFARI

Joel Zamudio









# GNOMES

SPELL BOOK IDEAS

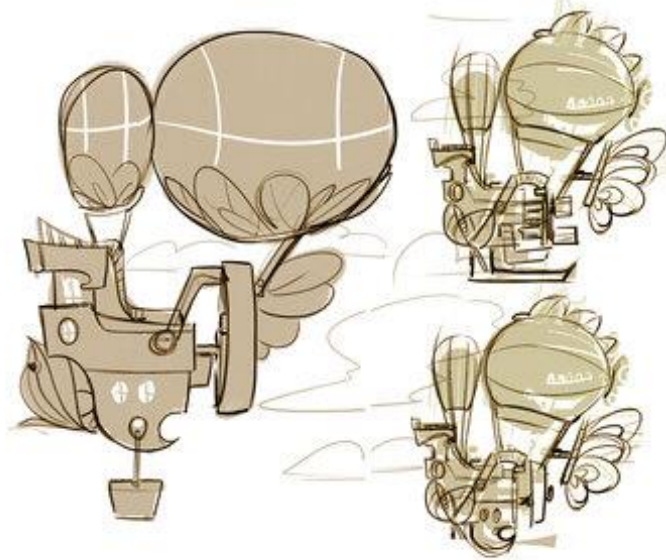
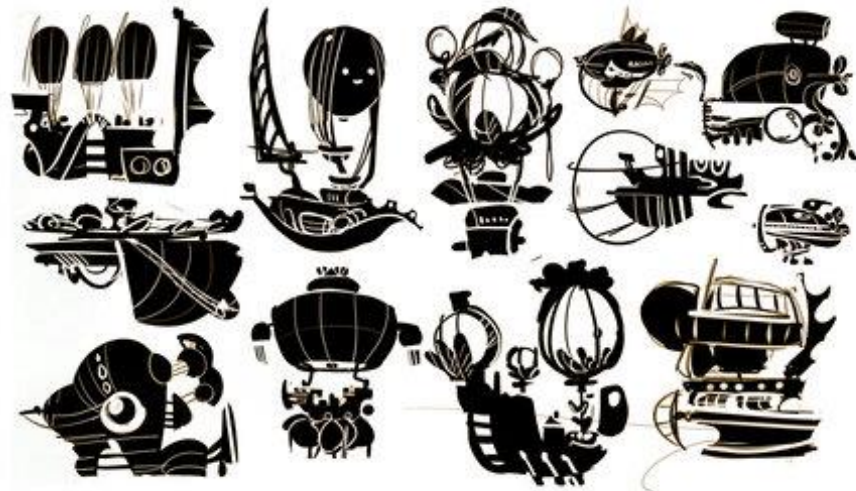


GNOMES



**GNOMES**

HOUSE IDEAS



**GNOMES**

SHIP IDEAS

# Character Design





Cesilia Gutierrez  
Character Design





# BAD CHICKS

CESILIA GUTIERREZ  
CHARACTER DESIGN





## ROBIN HOOD

The best sharp shooter the Wild West ever did see and the resident hero of Nottingham. Her main target?

Mayor Johnathan Bates.

The richest and most powerful bull in the County whose wealth comes from sucking all the money from the citizens. Under the cover of night she works to bring back the riches to the citizens who need it most.



# LIL JOHN

Friends since childhood, Lil John is Robin's best friend and partner in all the nightly thievery. He joins along in Robin's gang for the sake of doing what's right, but he's also there to keep an eye on Robin herself.

She's known to be extremely impulsive and has had plenty of close calls, Lil John is always there to back her up and help her out of every jam they get into.



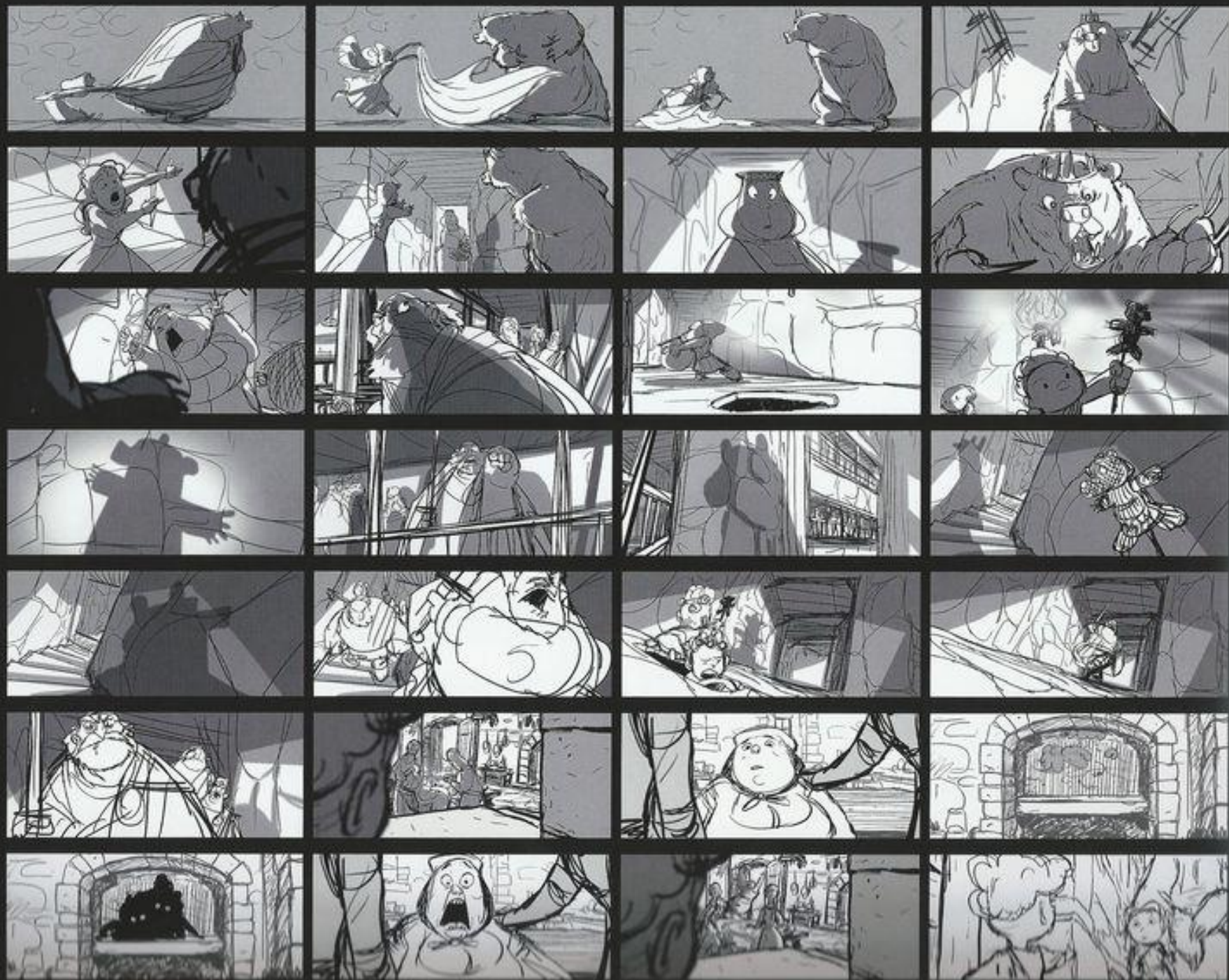
# CHARACTER LINE-UP

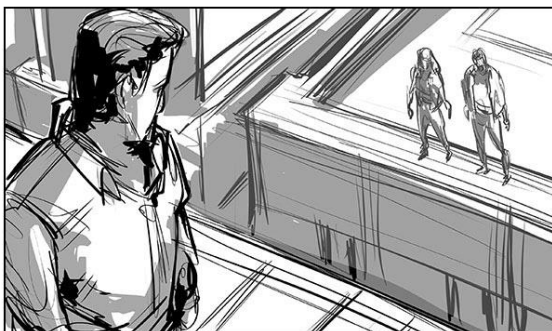
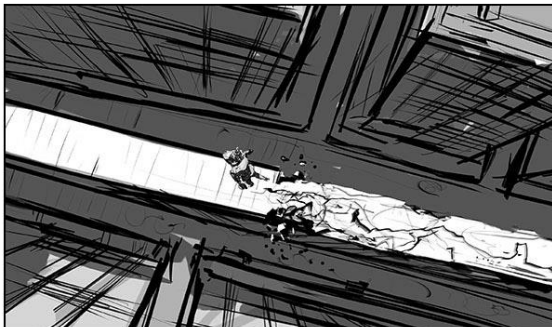


# Story Boarding

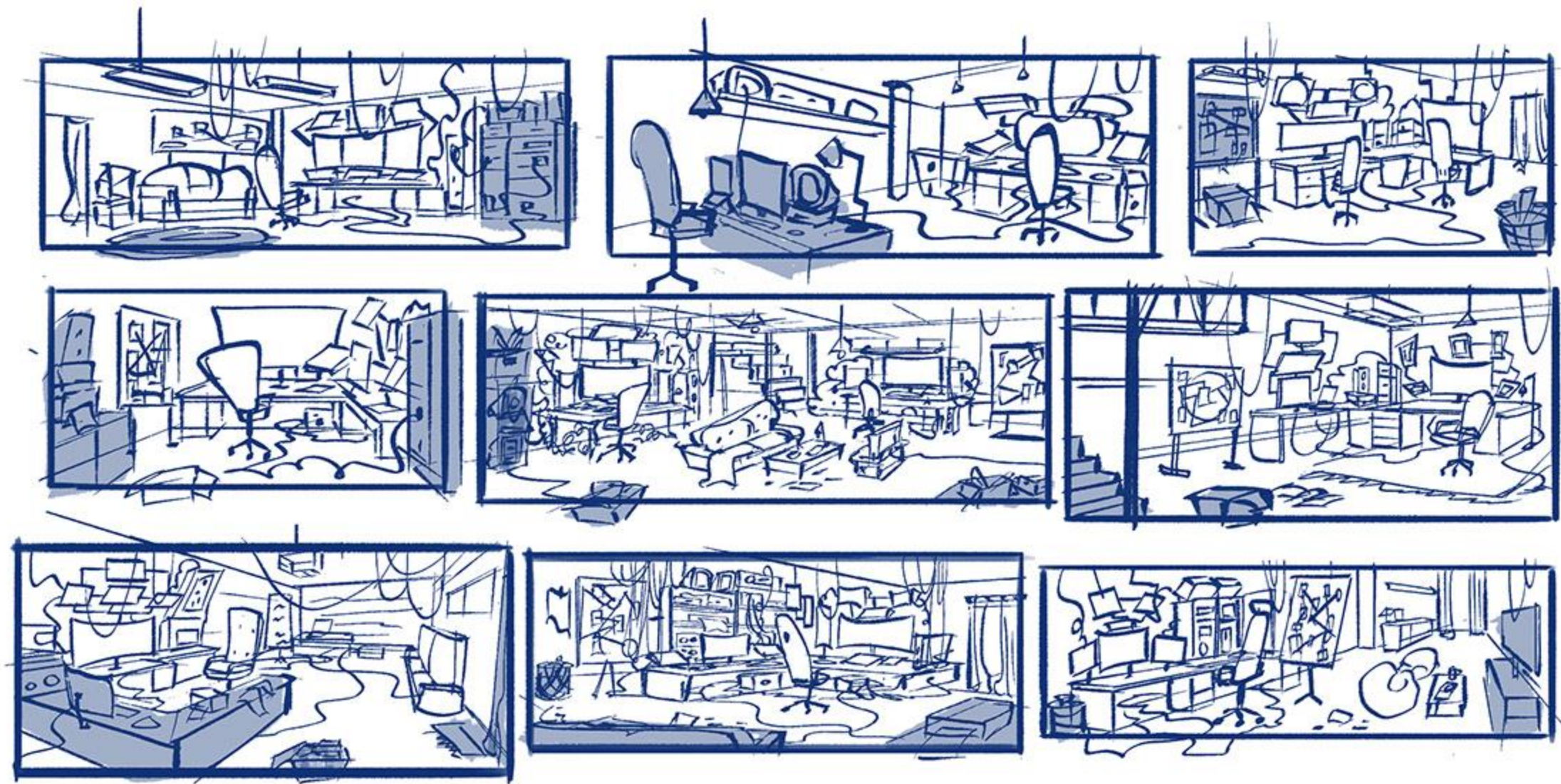






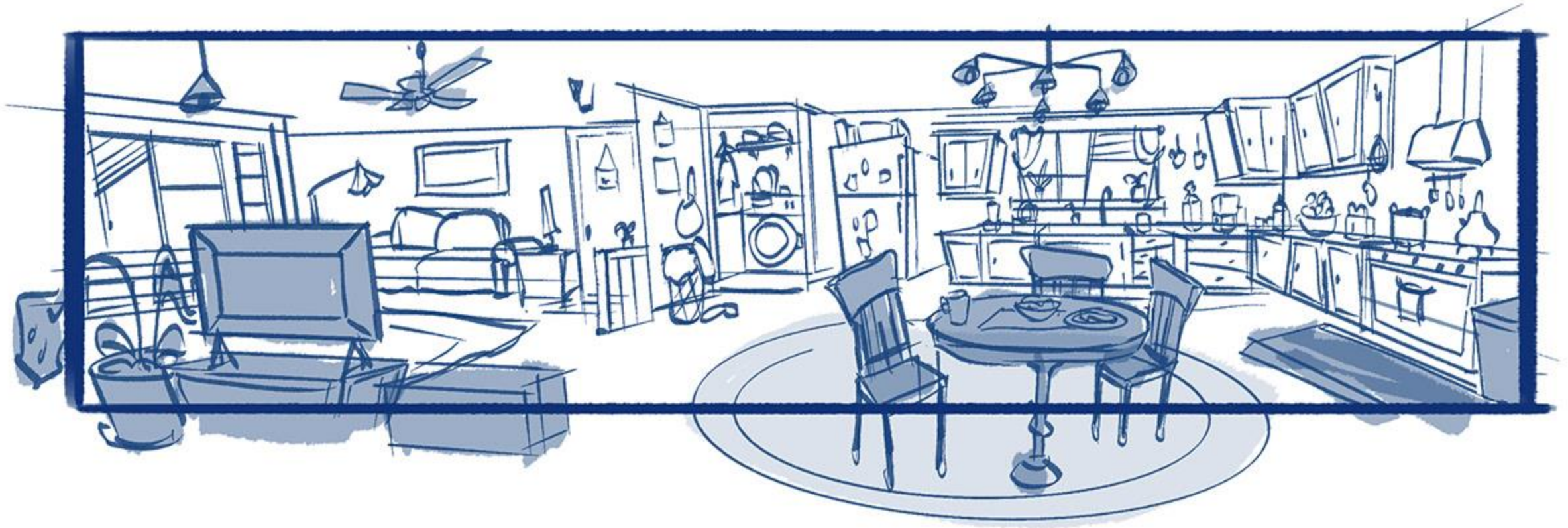


# Environment Design



HACKING HUDEOUT INTERIOR THUMBNAILS

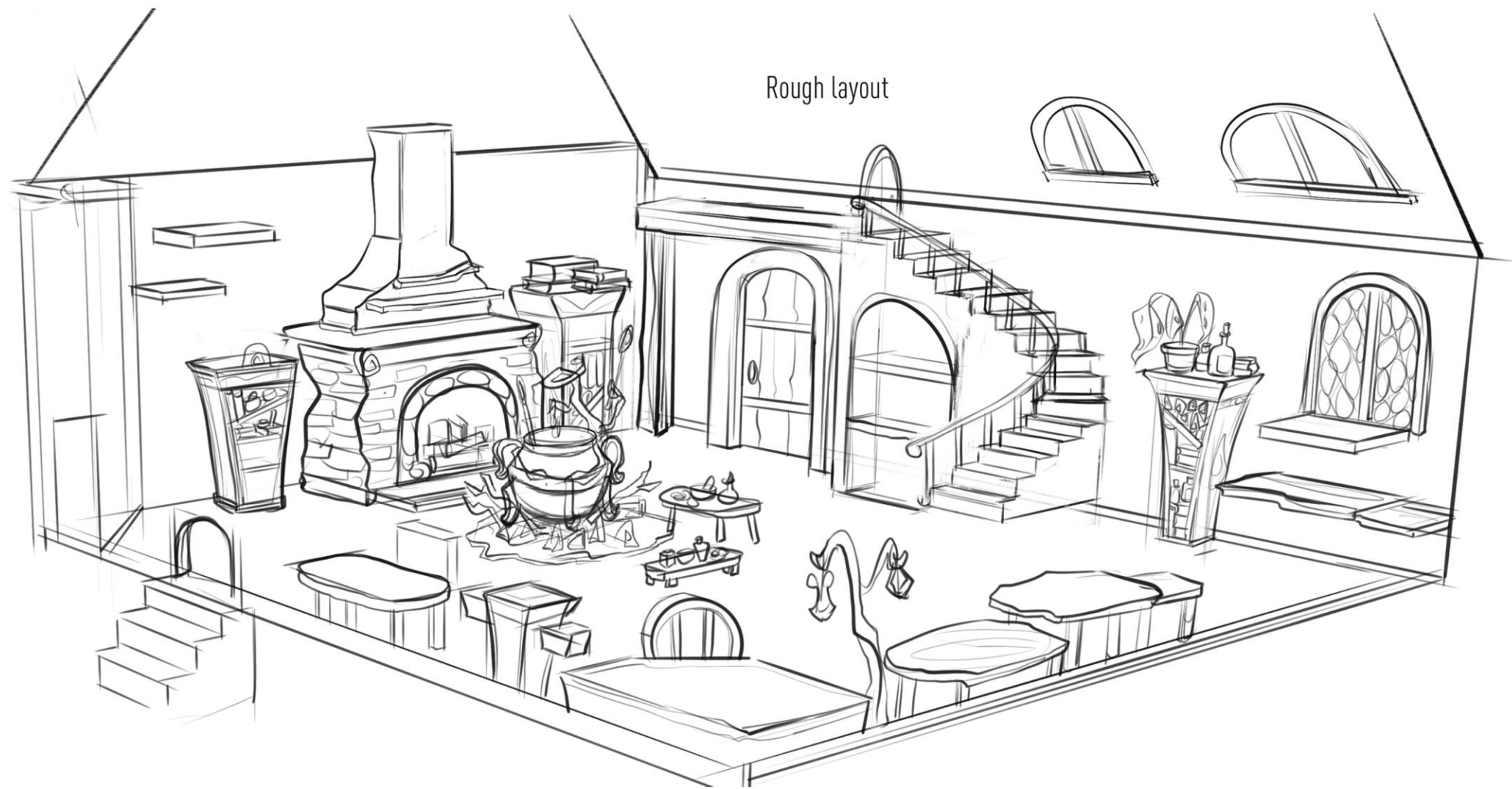
Taha Rahman



ROBIN S APARTMENT

Taha Rahman

Rough layout





Joel Zamudio



Joel Zamudio





Joel Zamudio



Joel Zamudio

# Digital Painting





**EXTERIOR SHOT** the schoolhouse

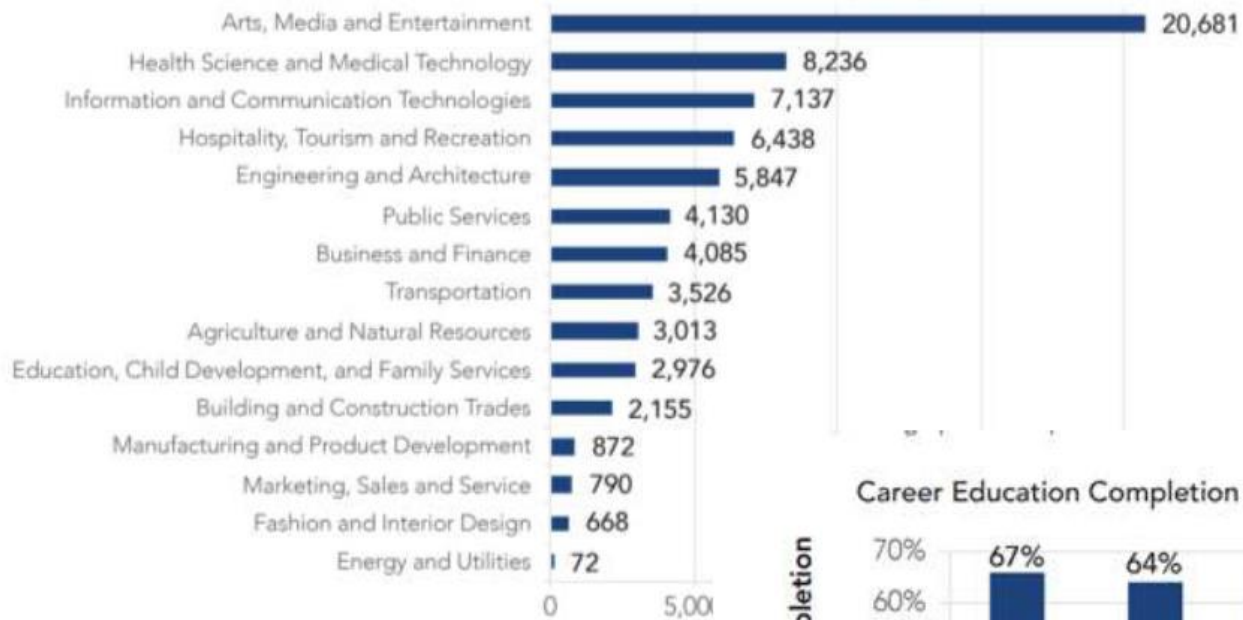




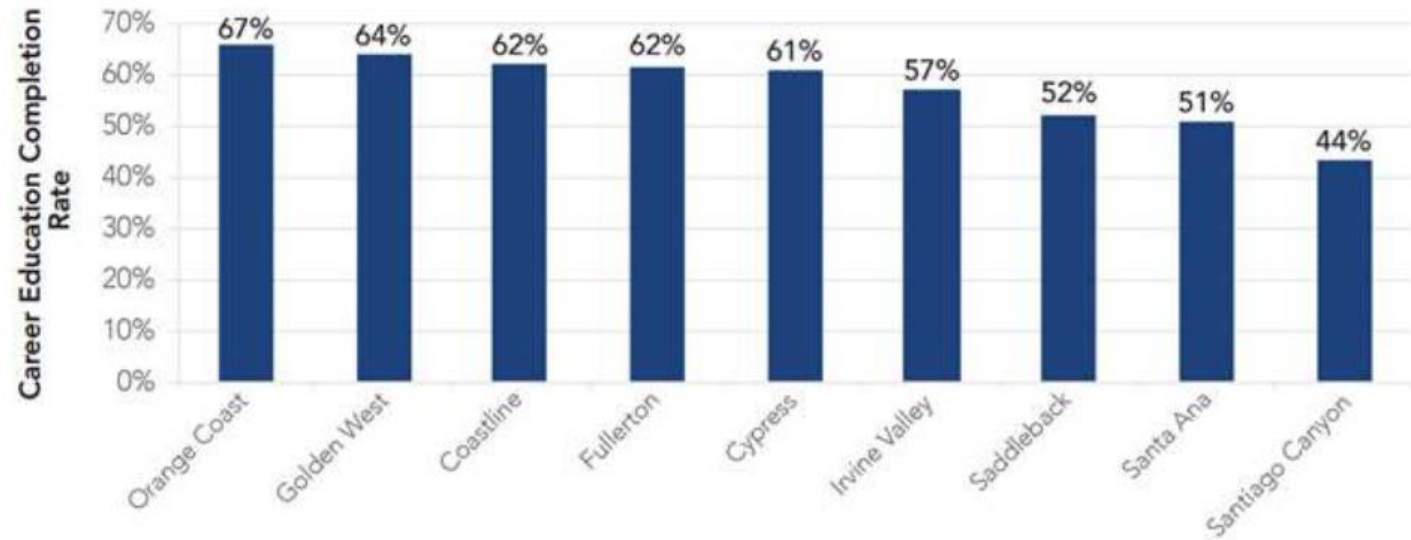
# Industry Information



Orange County Career Education Class Enrollment by Subject, 2017-2018



Career Education Completion Rate by Orange County Community College, Outcome Year 2016-2017



Source: California Community Colleges Chancellor's Office, Management Information Systems Data Mart

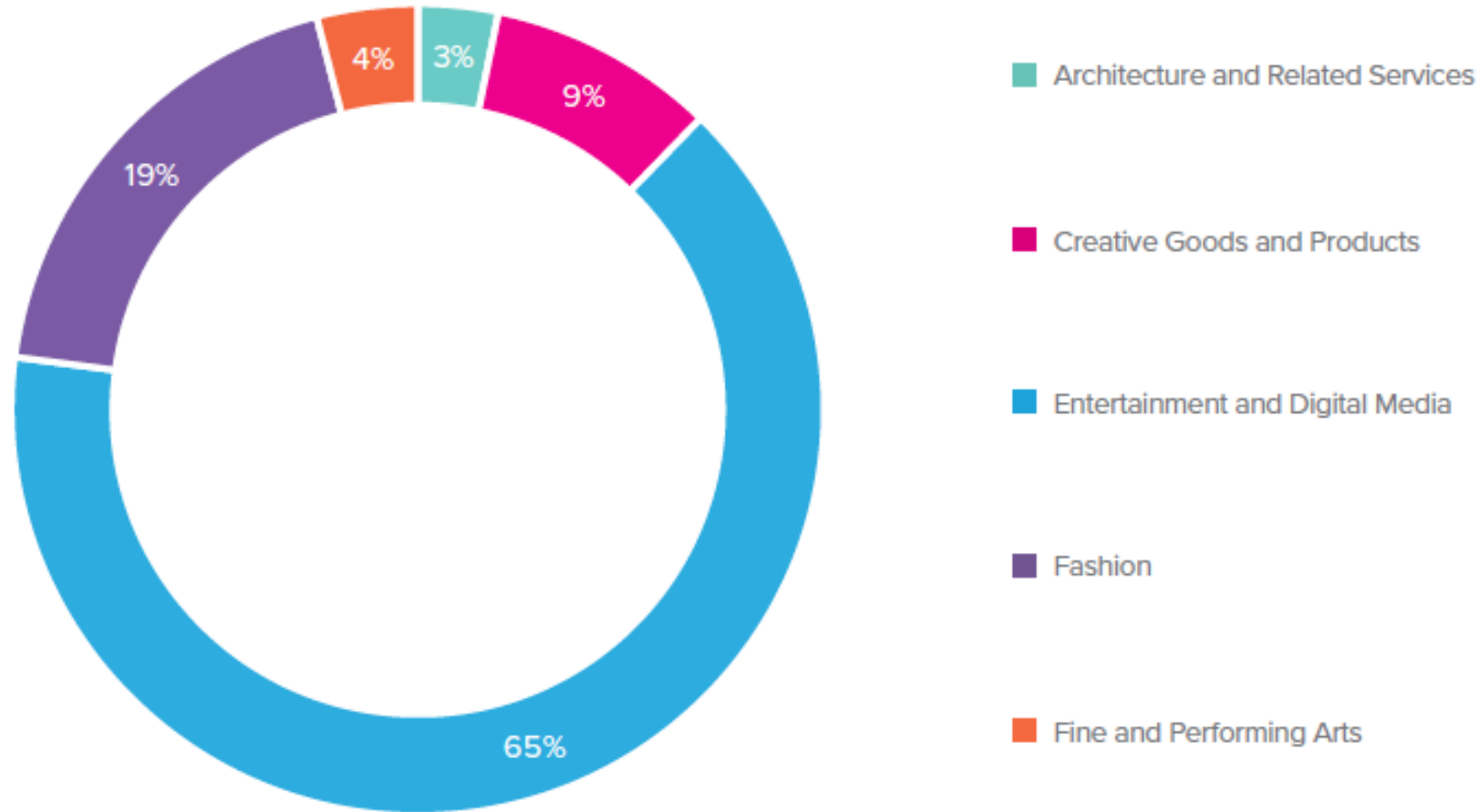
# Member Wage Survey, 2018

Once a year, we anonymously poll all members about the work they have done (union or non-union) in the previous twelve months, asking them what they have most recently been paid. The results are a barometer of the "going rates", as opposed to the CBA minimums. For comparison purposes, all salaries are computed on a forty-hour week.

Categories	Responses	Journey Minimum <sup>5</sup>	2018 Wage Survey			2017 Wage Survey	
			Minimum <sup>2</sup>	Median <sup>3</sup>	Maximum	Median <sup>3</sup>	Change
Story Art (responses: 26%) <sup>1,4</sup>							
Story Person (features, D-T-V)		\$2,004.00	\$1,018.18	\$2,389.05	\$5,500.00	\$2,161.00	\$228.05
Production Board		\$2,304.40	\$1,000.00	\$2,200.00	\$3,200.00	\$2,117.50	\$82.50
Story Artist/Writer		\$2,004.00	\$1,437.50	\$2,237.00	\$7,480.00	\$2,172.00	\$65.00
Revisionists		\$1,714.80	\$1,000.00	\$1,650.00	\$4,067.00	\$1,600.00	\$50.00
<u>UNIT RATES<sup>4</sup>:</u>							
2 min. Song Sequence (non-union) <sup>6</sup>	0	—				\$6,050.00	-\$6,050.00
Boards, per page (non-union) <sup>6</sup>	4	—	\$600.00	\$600.00	\$1,000.00	\$600.00	\$0.00
11 min boards, per episode	2	\$1,830.77	\$8,000.00	\$10,600.00	\$13,200.00	\$8,000.00	\$2,600.00
Layout/Background (responses: 14%) <sup>1,4</sup>							
Character Layout		\$2,004.00	\$1,347.37	\$2,023.42	\$2,884.38	\$2,100.00	-\$76.58
Rough Layout		\$2,004.00	\$1,010.53	\$2,132.00	\$2,442.11	\$2,133.33	-\$1.33
Final Layout		\$2,004.00	\$1,226.62	\$2,075.79	\$2,618.18	\$2,016.89	\$58.90
Previs Artists		—	\$1,140.00	\$2,132.63	\$3,115.79	\$2,088.89	\$43.74
Background Layout/Design		\$2,004.00	\$1,210.00	\$2,000.00	\$3,500.00	\$1,955.56	\$44.44
Background Painters		\$2,004.00	\$1,000.00	\$1,950.00	\$2,500.00	\$1,960.00	-\$10.00
<u>Unit Rates<sup>4</sup>:</u>							
BG Design - per piece (non-union) <sup>6</sup>	3	—	\$100.00	\$150.00	\$150.00	\$380.00	-\$230.00
Design/Color (response: 16%) <sup>1,4</sup>							
Art Directors		\$2,304.60	\$1,312.50	\$2,200.00	\$5,044.00	\$2,275.00	-\$75.00
Visual Development		\$2,004.00	\$1,096.83	\$2,010.53	\$3,500.00	\$1,888.00	\$122.53
Model Designers		\$2,004.00	\$1,300.00	\$2,000.00	\$2,947.37	\$1,943.11	\$56.89
Prop Designers		\$2,004.00	\$1,289.00	\$1,950.00	\$4,000.00	\$1,888.80	\$61.20
Assistants/Clean Up		\$1,714.80	\$1,468.75	\$1,700.00	\$1,953.60	\$1,700.00	\$0.00
Color Key/Color Stylists		\$1,714.80	\$1,175.56	\$1,700.00	\$2,400.00	\$1,660.00	\$40.00
Look Development		\$2,004.00	\$1,936.84	\$2,106.25	\$3,250.00	\$2,092.80	\$13.45
Production Designer		\$2,304.60	\$1,945.00	\$3,221.05	\$4,800.00	\$3,440.00	-\$218.95
<u>Unit Rates<sup>4</sup>:</u>							
Prop/Model Design - Per piece (non-union) <sup>6</sup>	1	—	\$50.00	\$50.00	\$50.00	\$0.00	\$50.00
Layout/Background (responses: 14%) <sup>1,4</sup>							
Character Layout		\$2,004.00	\$1,347.37	\$2,023.42	\$2,884.38	\$2,100.00	-\$76.58
Rough Layout		\$2,004.00	\$1,010.53	\$2,132.00	\$2,442.11	\$2,133.33	-\$1.33
Final Layout		\$2,004.00	\$1,226.62	\$2,075.79	\$2,618.18	\$2,016.89	\$58.90
Previs Artists		—	\$1,140.00	\$2,132.63	\$3,115.79	\$2,088.89	\$43.74
Background Layout/Design		\$2,004.00	\$1,210.00	\$2,000.00	\$3,500.00	\$1,955.56	\$44.44
Background Painters		\$2,004.00	\$1,000.00	\$1,950.00	\$2,500.00	\$1,960.00	-\$10.00
<u>Unit Rates<sup>4</sup>:</u>							
BG Design - per piece (non-union) <sup>6</sup>	3	—	\$100.00	\$150.00	\$150.00	\$380.00	-\$230.00

## Share of Employment in L.A. County by Creative Sector, 2017

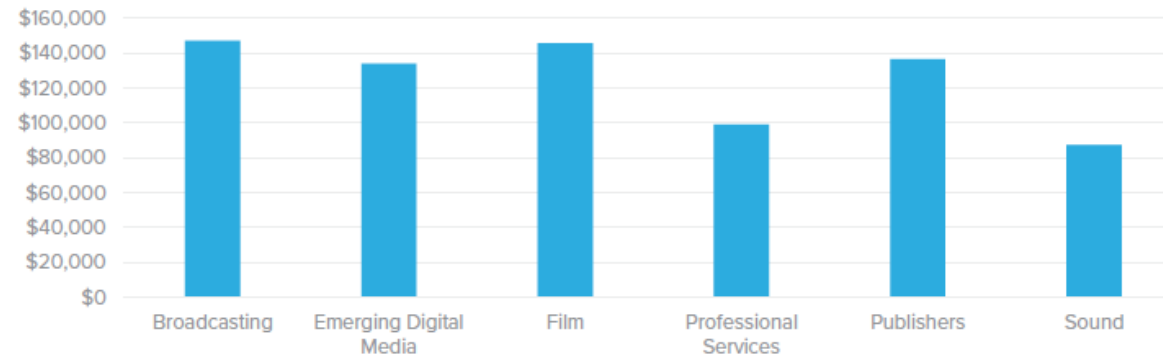
Figure 3.1



Source: Bureau of Labor Statistics, Quarterly Census of Employment and Wages (QCEW); Analysis by Beacon Economics

## Annual Average Wages by Entertainment and Digital Media Subsector in L.A. County, 2017

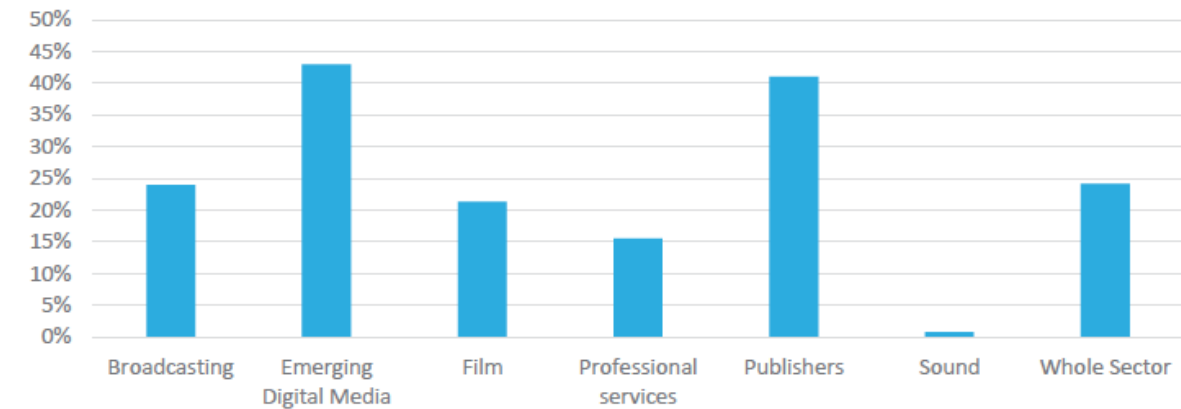
Figure 3.28



Source: Bureau of Labor Statistics, Quarterly Census of Employment and Wages (QCEW); Analysis by Beacon Economics

## Wage Growth by Entertainment and Digital Media Subsector in L.A. County, 2010-2017

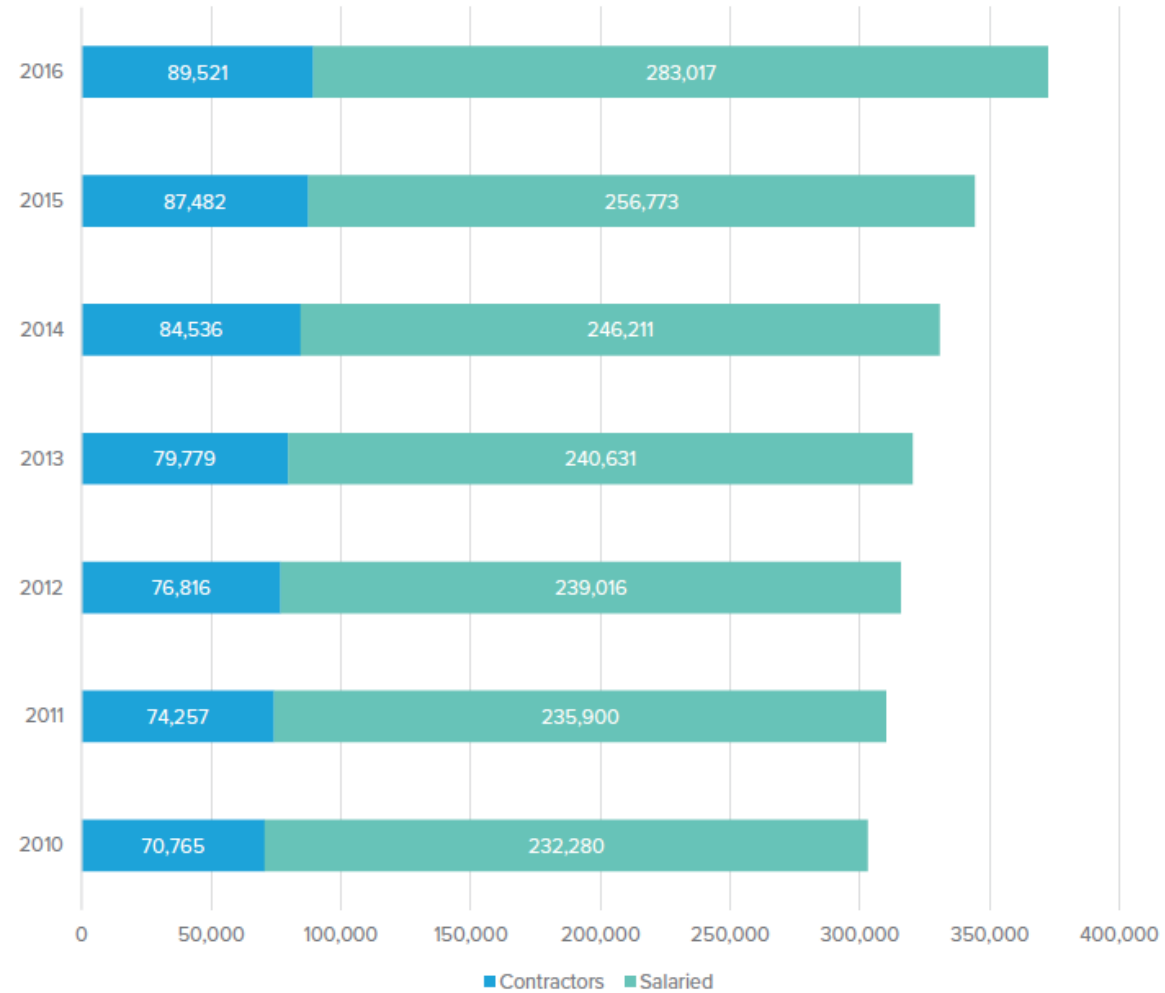
Figure 3.29



Source: Bureau of Labor Statistics, Quarterly Census of Employment and Wages (QCEW); Analysis by Beacon Economics

## Contract and Salaried Workers in the Entertainment and Digital Media Sector in L.A. County, 2010-2017

Figure 3.30



Source: Bureau of Labor Statistics, Quarterly Census of Employment and Wages (QCEW); Census Bureau, Nonemployer Statistics (NES); Analysis by Beacon Economics



# OCCUPATIONAL OUTLOOK HANDBOOK

Occupational Outlook Handbook > Arts and Design >

## Multimedia Artists and Animators

Summary | What They Do | Work Environment | How to Become One | Pay | Job Outlook | State & Area Data | Similar Occupations | More Info

### Summary

Quick Facts: Multimedia Artists and Animators	
2018 Median Pay <sup>?</sup>	\$72,520 per year \$34.87 per hour
Typical Entry-Level Education <sup>?</sup>	Bachelor's degree
Work Experience in a Related Occupation <sup>?</sup>	None
On-the-job Training <sup>?</sup>	None
Number of Jobs, 2018 <sup>?</sup>	71,600
Job Outlook, 2018-28 <sup>?</sup>	4% (As fast as average)
Employment Change, 2018-28 <sup>?</sup>	3,000



# OCCUPATIONAL OUTLOOK HANDBOOK

Occupational Outlook Handbook > Arts and Design >

## Art Directors

Summary | What They Do | Work Environment | How to Become One | Pay | Job Outlook | State & Area Data | Similar Occupations | More Info

### Summary

Quick Facts: Art Directors	
2018 Median Pay <a href="#">?</a>	\$92,780 per year \$44.60 per hour
Typical Entry-Level Education <a href="#">?</a>	Bachelor's degree
Work Experience in a Related Occupation <a href="#">?</a>	5 years or more
On-the-job Training <a href="#">?</a>	None
Number of Jobs, 2018 <a href="#">?</a>	101,000
Job Outlook, 2018-28 <a href="#">?</a>	1% (Little or no change)
Employment Change, 2018-28 <a href="#">?</a>	900