



WELCOME HORNETS!

Today, we will help you:

- Learn about your academic choices at Fullerton College
- Understand your math, reading, English or English as a Second Language reading placement and class choices
- Develop a Student Educational Program Plan (SEPP)
- Learn more about the North Orange Promise Program

You may view this presentation at counseling.fullcoll.edu/group-advising

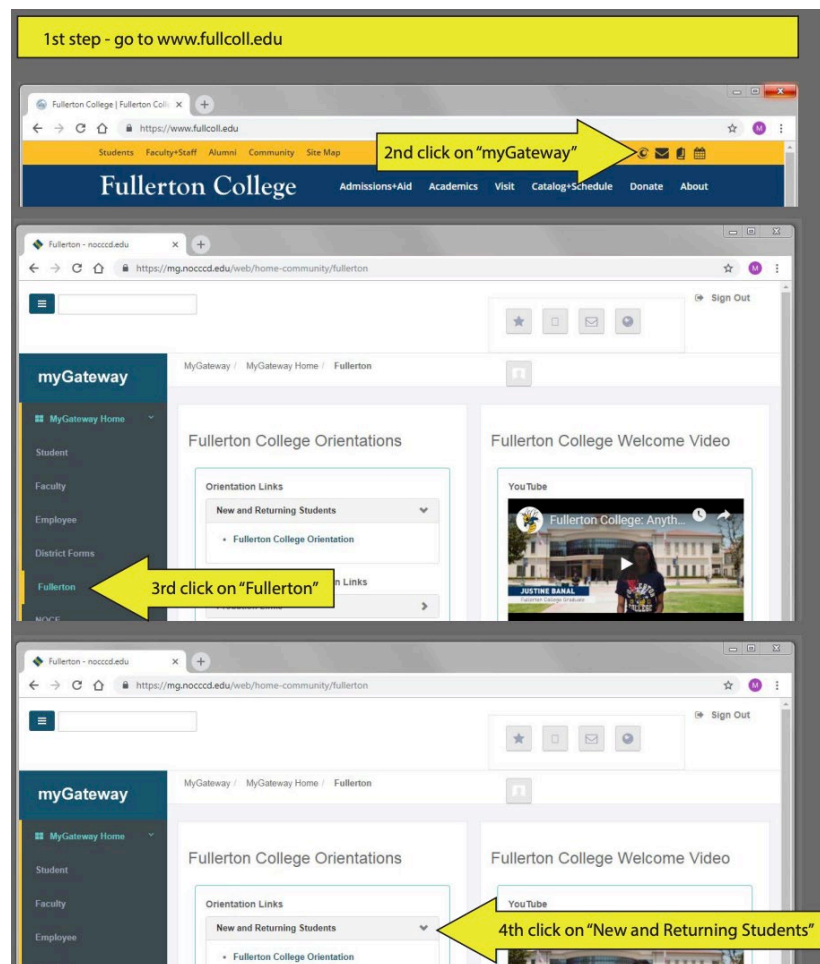
Active hyperlinks noted in this presentation are available via the Group Advising PDF on the website.





STEPS TO PRIORITY REGISTRATION

1. **Orientation** – Online through myGateway (here are [directions](#) to locate the online orientation)
2. **Assessment** – Done through the Counselor. The Counselor will assist you in your Math, Reading, English or English as a Second Language (ESL) classes to start with.
3. **Student Educational Program Plan (SEPP)**
The Counselor will give you your planned SEPP with your recommended courses.



Note: A better registration date may be given to students who have completed steps 1-3





MULTIPLE MEASURES PLACEMENT

Fullerton College Counselors use many factors (multiple measures) to determine your English and Math levels. Here are some of those multiple measures:

- High school transcript (classes, grades, grade point average)
- Test scores - Advanced Placement (AP), International Baccalaureate (IB)
- Other college transcripts
- Self-reporting if high school transcripts unavailable

A higher placement in English and Math may be possible by showing your second semester grades of your senior year

Chemistry Proficiency Test: The Fullerton College Assessment Center offers Chemistry tests which may allow you to enroll in a more advanced chemistry course. A grade of C or better in high school Precalculus or College Algebra also is required.

Please visit the assessment website for more information and to schedule: assessment.fullcoll.edu.

Please meet with a Counselor for advisement.





CHANGES IN ASSESSMENT (TESTING)

Testing is no longer used to determine a student's starting point in Math.

However, testing or guided self-placement is still used to help us determine English as a Second Language (ESL) placement. ESL students without a United States high school diploma are required to take the ESL Guided Self-Placement and ESL placement test (Accuplacer).

Retesting is allowed after 90 days or before 90 days with Counselor approval. Supporting documents (high school or college transcripts, other test scores, etc.) for retesting should be provided to the Counselor.

ESL students can access Fullerton College's ESL Guided Self-Placement and ESL Accuplacer online by visiting the Assessment Center website at assessment.fullcoll.edu and clicking on the Fullerton College Placement Guide link.

All students have the right to enter into university credit level course work and Associate degree credit level coursework in English as a Second Language (ESL).

Please meet with a Counselor for advisement and ESL Placement.

For more information about Math/English Assessment (AB705) please visit
assessment.cccco.edu/ab-705-implementation





APPEAL OF CLASS PLACEMENT

A student may appeal (request) a specific class placement for any of the following reasons:

- **Review of placement decision** - After meeting with a counselor, if a student does not agree with their class placement in English or Math, they may file an appeal.
- **Challenge of prerequisite.** A student may also challenge the prerequisite of a course if they believe they possess the skills to be successful in a class despite not having completed the prerequisite (a required class before taking the desired class). Student must provide supporting documentation.
- **Complaint of unlawful discrimination.** If a student feels that any part of the process of entering into the college (the matriculation process) is being applied in a discriminatory manner.

If you would like more information about challenging a prerequisite, it's important to work with a Counselor as a Prerequisite Challenge form may need to be submitted.





ENGLISH COMPOSITION CLASSES

(English 100, English 101 and English 110 each fulfill English Composition toward transfer to a university and also toward graduation for Associate Degrees)

ENGL 100 F
College Writing
(4 units)

College-level composition class that is designed to develop the reading, critical thinking, and writing strategies necessary for academic success. The emphasis is on reading and writing expository (descriptive) essays.

**Recommended for students
with a High School GPA of 2.6
or higher**

ENGL 101 F
Enhanced College Writing
(5 units)

College level composition class that includes a fifth hour of instruction per week to help students develop the reading, writing, and study skills necessary for academic success.

**Recommended for students
with a High School GPA of 2.59
or lower**

ENGL 110 F
**Enhanced College Writing for
Non-Native Speakers**
(5 units)

College level composition class that includes additional instruction in grammatical structures and vocabulary usage to empower non-native speakers to write with increasing clarity and style.

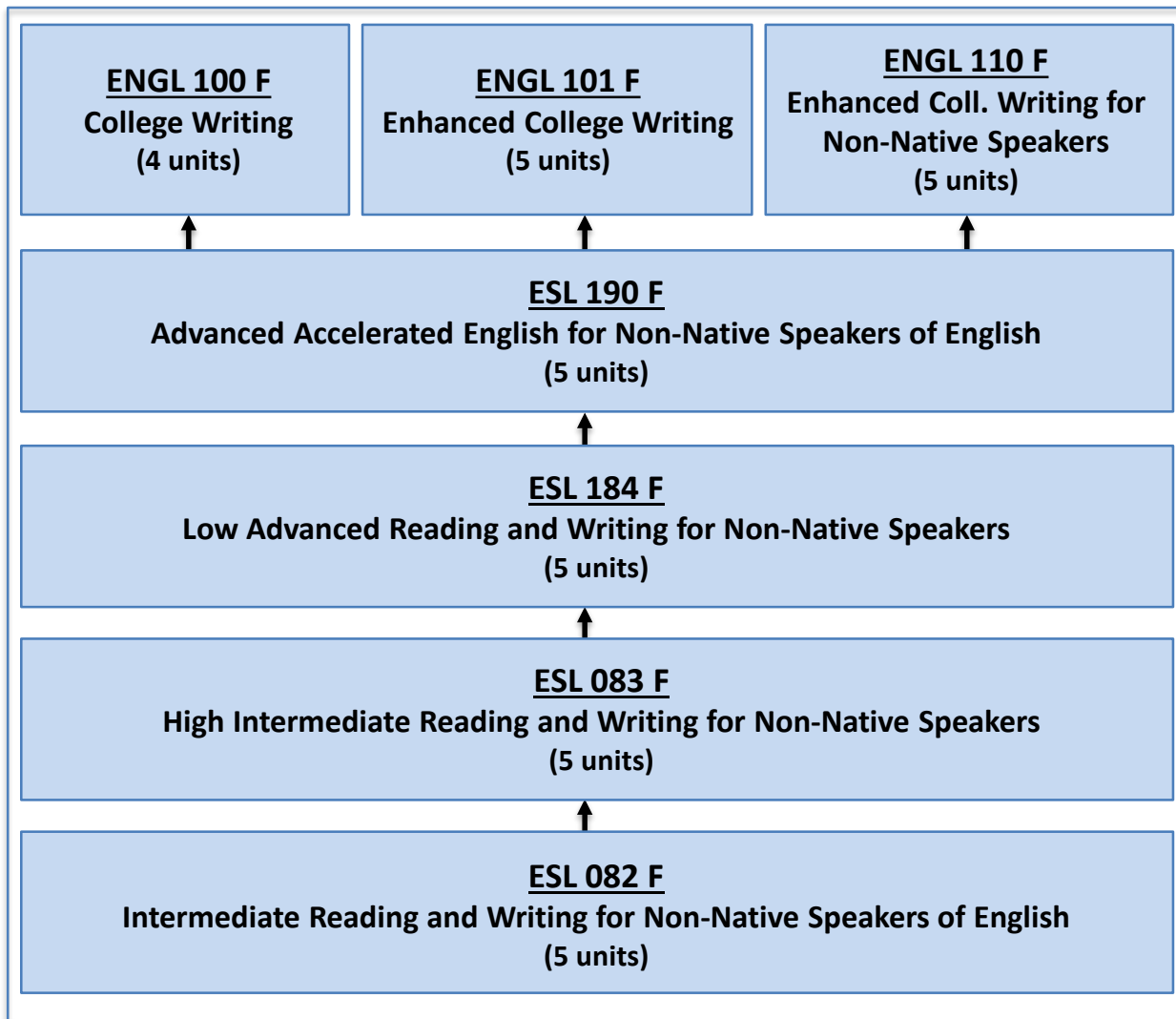
**Recommended for non-native
speakers of English.**

For complete descriptions of these classes view the online Fullerton College catalog at catalog.nocccd.edu/fullerton-college





ENGLISH AS A SECOND LANGUAGE (ESL) SEQUENCE



ESL SUPPORT COURSES

ADVANCED COURSES

ESL 056 F – Adv. Conversation
ESL 058 F – Adv. Pronunciation
ESL 045 F – Adv. Grammar
ESL 049 F – Academic Vocabulary
ESL 189 F – Reading

INTERMEDIATE COURSES

ESL 046 F – Int. Conversation
ESL 048 F – Int. Pronunciation
ESL 035 F – Int. Grammar
ESL 039 F – Vocabulary Expansion
ESL 029 F – Idioms

ADVANCED COURSES

ESL 036 F – Basic Conversation
ESL 038 F – Basic Pronunciation
ESL 025 F – Basic Grammar
ESL 010 F – Basic Technology for
Language Development





READING CLASSES

READ 142 F

**College Reading:
Logical Analysis and Evaluation
(3 units)**

Develop critical reading and thinking skills. Emphasis is placed on learning the strategies necessary to analyze and evaluate the validity and logic encountered in academic readings.

Fulfills reading graduation requirement toward traditional Associate Degree

Fulfills Critical Thinking Requirement for the University of California (UC) and California State University (CSU) Systems

Recommended for students with a High School GPA of 2.8 or higher

READ 127 F

**College Literacy Skills
(2 units)**

Learning strategies to succeed in college. Emphasis on disciplinary literacy, learning literacy, and digital literacy

Units are transferable to the CSU System

Recommended for students with a High School GPA of 2.79 to 2.0

READ 101 F

**Academic Literacy:
Analyses and Strategies
(3 units)**

This course will prepare students for the demands of college reading in academic subjects.

Fulfills reading graduation requirement toward traditional Associate Degree

Units are transferable to the CSU System

Recommended for students with a High School GPA of 1.9 or lower





MATHEMATICS CLASSES AND PLACEMENT RULES (NON-STEM)

FOR COLLEGE LEVEL TRANSFER COURSES – **FOR NON-STEM** (SCIENCE, TECHNOLOGY, ENGINEERING, MATH) MAJORS

High School Performance (Course + GPA)	Recommended Placement
Calculus 1 with C grade or higher and a GPA greater than, equal to or less than 2.0	MATH 100 F (Liberal Arts Mathematics), MATH 120 F (Intro. Probability and Statistics), SOSC 120 F (Intro. to Probability and Statistics), PSY 161 F (Elem. Statistics for Behavioral Science)
Enrolled Calculus 1 and a GPA greater than, equal to or less than 2.0	MATH 100 F (Liberal Arts Mathematics), MATH 120 F (Intro. Probability and Statistics), SOSC 120 F (Intro. to Probability and Statistics), PSY 161 F (Elem. Statistics for Behavioral Science)
Pre-Calculus with C grade or higher and a GPA greater than, equal to or less than 2.0	MATH 100 F (Liberal Arts Mathematics), MATH 120 F (Intro. Probability and Statistics), SOSC 120 F (Intro. to Probability and Statistics), PSY 161 F (Elem. Statistics for Behavioral Science)
Trigonometry with C grade or higher and a GPA greater than, equal to or less than 2.0	MATH 100 F (Liberal Arts Mathematics), MATH 120 F (Intro. Probability and Statistics), SOSC 120 F (Intro. to Probability and Statistics), PSY 161 F (Elem. Statistics for Behavioral Science)
Algebra 2 with B grade or higher and a GPA greater than, equal to or less than 2.0	MATH 100 F (Liberal Arts Mathematics), MATH 120 F (Intro. Probability and Statistics), SOSC 120 F (Intro. to Probability and Statistics), PSY 161 F (Elem. Statistics for Behavioral Science)
Algebra 2 with C grade or higher and a GPA greater than, equal to or less than 2.0	MATH 100 F (Liberal Arts Mathematics), MATH 121 F (Enhanced Introductory Probability and Statistics), SOSC 120 F (Intro. to Probability and Statistics), PSY 161 F (Elem. Statistics for Behavioral Science). All with academic support.
Algebra 1 with C grade or higher and a GPA greater than, equal to or less than 2.0	MATH 100 F (Liberal Arts Mathematics), MATH 121 F (Enhanced Introductory Probability and Statistics), SOSC 120 F (Intro. to Probability and Statistics), PSY 161 F (Elem. Statistics for Behavioral Science). All with academic support.
All other math classes and a GPA greater than, equal to or less than 2.0	MATH 100 F (Liberal Arts Mathematics), MATH 121 F (Enhanced Introductory Probability and Statistics), SOSC 120 F (Intro. to Probability and Statistics), PSY 161 F (Elem. Statistics for Behavioral Science). All with academic support.

BUS 101 F (Personal Financial Management) and **BUS 151 F** (Business Mathematics) are also acceptable for California State University (CSU) when your transfer major does not require a specific math class.

For complete descriptions of these classes view the online college catalog at catalog.nocccd.edu/fullerton-college/





MATHEMATICS CLASSES AND PLACEMENT RULES (STEM)

FOR HIGHER LEVEL TRANSFER COURSES – TYPICALLY FOR SCIENCE, TECHNOLOGY, ENGINEERING, MATH (STEM) MAJORS

High School Performance (Course + GPA)	Recommended Placement
AP Calculus BC High School class with C or better	MATH 251 F (Multivariable Calculus)*
AP Calculus AB High School class with C or better	MATH 152 F (Calculus 2)*
Calculus 1 with C grade or higher and a GPA greater than, equal to or less than 2.0	MATH 130 F (Calculus for Business), MATH 151 F (Calculus 1), MATH 170 F (Discrete Structures), MATH 171 F (Discrete Mathematics), MATH 172 F (Graph Theory and Linear Algebra)
Calculus 1 (enrolled) and a GPA greater than or equal to 2.6	MATH 130 F (Calculus for Business), MATH 151 F (Calculus 1), MATH 170 F (Discrete Structures), MATH 171 F (Discrete Mathematics), MATH 172 F (Graph Theory and Linear Algebra)
Calculus 1 (enrolled) and a GPA equal to or lower than 2.5	MATH 130 F (Calculus for Business), MATH 141 F (College Algebra), MATH 143 F (Enhanced College Algebra), MATH 142 F (Trigonometry)
Pre-Calculus with C grade or higher and a GPA greater than or equal to 3.4	MATH 130 F (Calculus for Business), MATH 151 F (Calculus 1), MATH 170 F (Discrete Structures), MATH 171 F (Discrete Mathematics), MATH 172 F (Graph Theory and Linear Algebra)
Pre-Calculus with C grade or higher and a GPA equal to or greater than 2.6 to 3.3	MATH 130 F (Calculus for Business), MATH 141 F (College Algebra), MATH 142 F (Trigonometry)
Pre-Calculus with C grade or higher and a GPA less than or equal to 2.5	MATH 131 F (Enhanced Calculus for Business), MATH 144 (Enhanced Trigonometry), MATH 143 F (Enhanced College Algebra)
Trigonometry with C grade or higher and a GPA greater than or equal to 3.4	MATH 131 F (Enhanced Calculus for Business), MATH 144 (Enhanced Trigonometry), MATH 143 F (Enhanced College Algebra)
Trigonometry with C grade or higher and GPA less than or equal to 3.3	MATH 131 F (Enhanced Calculus for Business), MATH 144 (Enhanced Trigonometry), MATH 143 F (Enhanced College Algebra)
Statistics or Algebra 1 or Algebra 2 with C grade or higher and GPA greater than, equal to or less than 2.0	MATH 131 F (Enhanced Calculus for Business), MATH 144 (Enhanced Trigonometry), MATH 143 F (Enhanced College Algebra)

*Students interested in the University of California (UC) may need to take college Calculus 1 and/or Calculus 2 instead of placing higher as per major requirements of the specific UC





TUTORING AND SUPPORTS FOR MATHEMATICS

[FC MILES](#)

(Fullerton College Math
Institute for Learning
Enhancement Success)

FC MILES is a free, non-credit program intended to provide students with extra support in math.

FC MILES is a math program designed to help students strengthen their math skills. In the summer, students will prepare for the math class they will take in fall. During the the fall and spring semesters, FC MILES offers concurrent support for students enrolled in a math class, primarily Math 100 F, 120 F, and 141 F. Click the hyperlink in the box to the left to visit the FC MILES website.

[MATH LAB](#)

(a zero-unit,
no cost, no credit
tutoring course)

Math Lab provides students with the support and services they need to help them be successful in their math courses.

Students enrolled in any Fullerton College math class are eligible to enroll in this zero unit non-credit course and use the Math Lab. The Math Lab is only available for virtual tutoring at this time. To access the virtual Math Lab, please ask your instructor for the Zoom ID or feel free to email mathlab@fullcoll.edu for virtual access. This Lab provides students with the support and services they need to help them be successful in their math courses, prepare them for the next level of mathematics and acquire skills necessary to their timely advancement toward their goals. Students will find instructors and qualified tutors available for assistance in solving mathematical problems or in understanding mathematical concepts. Click the hyperlink in the box to the left to visit the MATH LAB website.

[ACADEMIC SUPPORT CENTER](#)

(embedded tutoring
math classes)

The Academic Support Center offers embedded tutors in mathematics classes.

As a part of the Library/Learning Resources, Instructional Support Programs & Services Division, the Academic Support Center (ASC) provides instructional support services to students, faculty, and staff with the aim of helping students achieve academic success. The ASC is comprised of four related services: the Skills Center, the Reading Center, the Tutoring Center, and the Writing Center. The Academic Support Center does not focus specifically on Math tutoring, that's the MATH LAB, but it does offer tutors that are embedded into some college classes, including math. Click the hyperlink in the box to the left to see the classes with embedded tutors.

[NORTH ORANGE CONTINUING EDUCATION](#)

North Orange Continuing Education (NOCE) offers courses to refresh on your basic math, pre-algebra and elementary algebra.

North Orange Continuing Education (NOCE) has a comprehensive presence in the community and is recognized for excellence. NOCE embraces multiple facets of diversity and is committed to outcome-oriented educational opportunities in preparing students for productive civic engagement. NOCE is an effective and affordable option for students who are acquiring personal, academic, and career skills. NOCE is responsive to evolving community needs. NOCE offers courses to refresh on your basic math, pre-algebra and elementary algebra. Click the hyperlink in the box to the left to visit the NOCE website.





ACADEMIC OPTIONS

CERTIFICATE	ASSOCIATE DEGREE	ASSOCIATE DEGREE FOR TRANSFER	TRANSFER (WITHOUT ASSOCIATE)
General Education (GE) classes not required	24 GE units required	38 - 41 CSU GE units required	GE classes required
Units vary per certificate	60 degree applicable units	60 CSU transferable units	Units vary
2.0 G.P.A.	2.0 G.P.A.	2.0 G.P.A. minimum Higher G.P.A. often needed for selective universities and majors	G.P.A. minimum varies Higher G.P.A. often needed for selective universities and majors
Certificates provide: <ul style="list-style-type: none">▪ Skills to enter workforce▪ Professional development in current job or future occupation▪ Personal enrichment	Additional graduation requirements include: <ul style="list-style-type: none">▪ Reading requirement▪ Multicultural class▪ 1 unit physical education or dance activity class	Transfer perks to the California State University <ul style="list-style-type: none">▪ 0.10 CSU G.P.A. bump▪ Guaranteed CSU admission▪ Guaranteed 60 units max after transfer	Start here and transfer anywhere <ul style="list-style-type: none">▪ CA State universities▪ Out-of-state universities▪ Private colleges and universities

For more details refer to the [Fullerton College Catalog](#) and see a Counselor





VERY IMPORTANT INFORMATION IF YOU HAVE A DEGREE FROM YOUR COUNTRY

California State University (CSU) and University of California (UC) are public transfer universities and may not admit students who want to earn a **second** Bachelor's Degree.

If you are thinking about transferring to a CSU/UC and you already have a degree that is equal to a Bachelor's Degree, please inform your counselor about this during your appointment while planning your courses. There may be just a few majors that allow students to get a second Bachelor's Degree or some CSUs/UCs that allow admission to all majors. Counselors can provide guidance so that students can research more about earning a second Bachelor's degree from a CSU/UC, or possibly going for an advanced degree.

If you do not share your degree information with the CSUs/UCs, that is considered academic dishonesty on your record and they will never allow you admission.

Our community college system may accept some foreign credit as elective units. Ask a counselor for more details.





GENERAL EDUCATION PATTERNS

ASSOCIATE DEGREE GENERAL EDUCATION REQUIREMENT FULLERTON COLLEGE 2021 – 2022

Twenty-four (24) units total minimum requirement - Three (3) units in each of the following eight (8) sub-categories.

NOTE: This list does not meet the requirements for UC or CSU transfer.

New courses for 2021-2022 are listed in ***Bold Italics***.

*Courses can be used only in one area (Area A to D)

Legend: **C** = Completed; **IP** = In Progress; **R** = Remaining

	C	IP	R
AREA A: LANGUAGE AND RATIONALITY (6 units)			
A1 - Written Communication (3 units) **completed with a grade of "C" or better** BUS 111 F; ENGL 100 F or 100HF, 101 F, 110 F (<i>beg F20</i>); JOUR 101 F			
A2 - Analytical Thinking (3 units)			

CALIFORNIA STATE UNIVERSITY GENERAL EDUCATION REQUIREMENTS FULLERTON COLLEGE 2021 - 2022

Legend: **C** = Completed; **IP** = In Progress; **R** = Remaining

For CSU GE CERTIFICATION: AREA A1, A2, A3, and B4 must have grades of "C-" or better.

	C	IP	R
AREA A: ENGLISH LANGUAGE COMMUNICATION AND CRITICAL THINKING (9 semester or 12-15 quarter units). One 3 unit course is required from each section.			
1. ORAL: BUS 112 F (<i>beg F 16</i>); COMM 100 F, 124 F, 135 F*			
2. WRITTEN: ENGL 100 F or 100HF, 101 F, 110 F			
3. CRITICAL THINKING: COMM 135 F*; ENGL 103 F or 103HF, 104 F, 201 F; PHIL 170 F, 172 F; READ 142 F			

INTERSEGMENTAL GENERAL EDUCATION TRANSFER CURRICULUM (IGETC) 2021 – 2022

Completion of the IGETC will permit a student to complete their lower division G.E. requirements to either the California State University (CSU) or University of California (UC) system. Courses on this list are approved for the academic year 2021-2022 which begins Fall Semester, 2021. This list is valid through Summer 2022. New courses are listed in **Bold**. It should be noted that completion of the IGETC is not a requirement for transfer to CSU or UC, nor is it the only way to fulfill the lower-division general education requirements of the CSU or UC prior to transfer. **A grade of "C" or higher is required in ALL coursework used for IGETC certification.**

Legend: **C** = Completed; **IP** = In Progress; **R** = Remaining

	C	IP	R
AREA 1 - ENGLISH COMMUNICATION: CSU 3 courses = 9 semester units / 12-15 quarter units UC 2 courses = 6 semester units / 8-10 quarter units			
1A English Composition: ENGL 100 F or 100HF, 101 F, 110 F (<i>beg F21</i>) (1 course required)			
1B Critical Thinking - English Composition: ENGL 103 F or 103HF, 104 F, 201 F; PHIL 172 F; READ 142 F (<i>beg F21</i>) (1 course required)			
1C Oral Communication: COMM 100 F, 124 F, 135 F (1 course required for CSU; students transferring to UC do not have to meet the Oral Communication requirement)			





ONLINE STUDENT SUPPORT AND RETURN TO CAMPUS INFORMATION

Go to:

fullcoll.edu/students/

to access online student support.

Including technical support for Canvas, laptop loans, registration tips, frequently asked questions and Office 365.

Go to:

fullcoll.edu/return

to access return to campus information

ACADEMIC SUCCESS RESOURCES



ACADEMIC SUPPORT CENTER



ACADEMIC COUNSELING



LIBRARY



TRANSFER CENTER



HORNETS TUTORING

Academic Degrees & Certificates

Career Education Programs

Career & Life Planning

Catalog & Schedule

MORE RESOURCES

Faculty & Staff Directory

FC Miles (math support)

Honors Program

Math Lab

Online Tutoring

STEM Community

Service Learning

Writing Center

RETURN TO THE HIVE

[Home](#) [Testing](#) [Safety First](#) [Campus Check-in](#) [On-Campus Services](#) [Online Services](#) [Student Support](#) [Faculty & Staff](#) [Community](#) [Updates](#)

SPRING SEMESTER

Fullerton College is prepared to gradually reopen in-person services and offer more face-to-face classes starting the week of February 7. Due to the unfortunate surge Orange County is experiencing from the highly transmittable nature of the Omicron variant, Fullerton College started the Spring Semester on Monday, January, 24, with mostly remote classes and services through February 4.

COVID-19 SAFETY

All students taking classes in-person or accessing services on-campus are required to visit the **health check-in area** where they are screened for COVID-19 symptoms. Students must be in compliance with the NOCCCD vaccine mandate to take classes in-person and receive services on-campus. Students with approved exemptions to the NOCCCD vaccine mandate must test weekly when they come to campus for in-person classes or services. If their class is moved online until February 4, testing will be required beginning February 7. **COVID-19 testing details can be found here.**





CLASS SCHEDULE

- Students may access the online PDF version for **free**.
- As classes fill, students may use the up-to-date searchable class schedule or the List of Open Classes in MyGateway.



SCHEDULE ONLINE

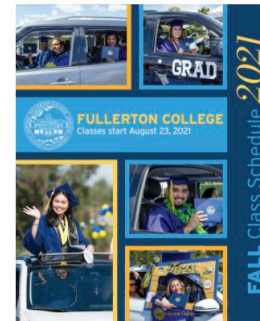
Search the class schedule online for the current list of classes being offered.

[VIEW ONLINE SCHEDULE](#)

OPEN CLASSES

Click here to view a list of currently open classes at Fullerton College.

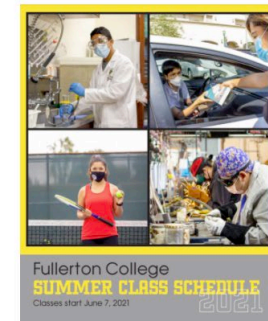
FALL 2021



View changes to the Fall 2021 PDF schedule, click here.

[DOWNLOAD FALL SCHEDULE](#)

SUMMER 2021



View changes to the Summer 2021 PDF schedule, click here.

[DOWNLOAD SUMMER SCHEDULE](#)





UNDERSTANDING THE CLASS SCHEDULE

Subject & Class Number **COUN 151 F**

Unit Total of Class **3 Units**

Career and College Success (formerly Career/Life Planning)

Units Accepted by the California
State University and the University of
California

Transfer: CSU, UC

Brief Class Description:
for the Full Class Description
Read it in the Online College
Catalog:
catalog.noccd.edu/fullerton-college/

This course is for students who are undecided about their major or career path, are in career transition and/or are looking for ways to achieve academic and career success. This includes an in-depth analysis of one's values, interests, abilities and personality; including goal setting, career research and taking responsibility for one's academic, career and personal success.

• PASS/NO PASS/LETTER GRADE OPTION

Class Registration Number **21865**

001 12:45- 2:10 P MW Time & Days Card, Margaret **Instructor** ZOOM

The above class requires mandatory attendance at **"live" (synchronous)** virtual class sessions on CANVAS/ZOOM with the instructor during the days and times listed in the class schedule. For class-specific requirements, contact the instructor, pcard@fullcoll.edu.

This class section 21237 is for students that are a part of the Extended Opportunity Program & Services and CARE program. The student would need to be in the program to be in that section of the class.

21237 E01 1/25-3/21 Edwards, Arnette ONLINE

ONLINE CLASS (EOPS/CARE): The above class is for students participating in EOPS/CARE and is conducted **ENTIRELY ONLINE (asynchronously)** and uses CANVAS. Students must log onto this class and follow the directions of the instructor by the first day of class or may be dropped. For class-specific requirements, contact the instructor at Aedwards@fullcoll.edu.

Other programs with their own
Classes: Honors, Puente, Umoja,
Teacher Pathway Program, STEM



FREE TEXTBOOK: The above class will provide students with a free textbook
Last day to add: Feb 2; Last day to drop without "W": Feb 2;
Last day to drop with "W": Mar 8; Last day to drop for refund: Jan 29.

Legend: F=Fullerton College, C=Cypress College, H=Honors, L=Lab

(To read the full class description refer to the Fullerton College Catalog available at
www.fullcoll.edu under "Catalog+Schedule.")





ONLINE SEARCHABLE CLASS SCHEDULE



NOC CCD Searchable Class Schedule

Class Schedule Search Results for **Spring 2020**

NOTE: Further details about each course are available by clicking the CRN link.

ENGL - English

ENGL 103 F - Critical Reasoning and Writing

Status	CRN	Cred	Meeting Time		Location	Cap	Act	Rem	Wait	Instructor	Date	Weeks
CLOSED	21912	4.0	T	Th	09:30am - 11:35am	19	13	6	0	Sanchez, Adriana	01/27-05/23	16

End of report

CRN 21912

ENGL English

Spring 2020 This course develops critical thinking, reading, and writing skills beyond the level achieved in ENGL 100 F. This course will focus on developing analytical and argumentative writing skills, the development of logical reasoning and information literacy. This course fulfills the reading requirement for graduation.

Prerequisites: ENGL 100 F or ENGL 100HF or ENGL 101 F with a grade of C or better.

Transferability: CSU, UC

Course Corequisites: NONE

Section Information as of 19-MAY-2020 04:05:35 PM

PUENTE HONORS COURSE: The above course is for students participating in the Puente Program as well as the Honors Program. Before registering for the above course, please contact the Honors Program at (714) 992-7133 and the Puente counselor at (714) 992-7240.

- Title: ENGL 103 F Critical Reasoning and Writing
- CRN: 21912
- Instructor: Sanchez, Adriana
- Section Corequisites: NONE

CLASS CAPACITY

SEATS TAKEN

SEATS AVAILABLE

NUMBER ON WAITLIST





WEEKLY STUDY REQUIREMENTS

Full-Time Students

12 units = 12 hours of time in class a week

Studying = 24 hours per week

**Total = 36 hours devoted to college
per week**

***Full-Time students should consider
working no more than 10 hours a week***

Part-Time Students

6 units = 6 hours of time in class a week

Studying = 12 hours per week

**Total = 18 hours devoted to college
per week**

***Part-Time students should consider
working no more than 30 hours a week***

Double your unit total to determine amount of study time per week

Examples: 1 unit = 2 hours of study time per week

3 units = 6 hours of study time per week





BE SUCCESSFUL AND STAY ON TRACK

Progress Probation: A student who has enrolled in a total of at least 12 semester units at the college shall be placed on progress probation when the student receives grades of “W,” “I,” “NC” or “NP” in a total of **50%** or more of all units for which the student has enrolled at the college.

Academic Probation: A student who has attempted at least 12 semester units at the college shall be placed on academic probation if the student has earned a cumulative grade point average below 2.0 in all units taken at the college.

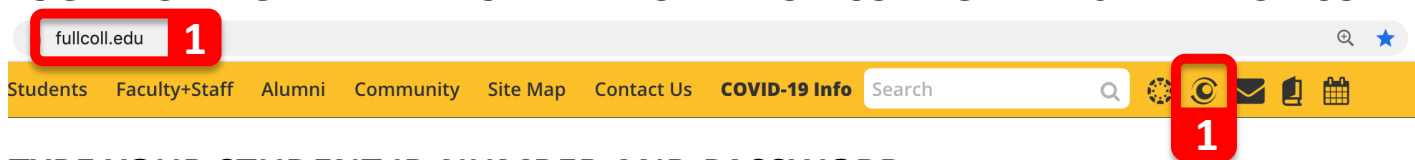
- **Important note:** To receive federal financial aid students must maintain a 2.0 GPA or higher AND complete at least 67% of total units attempted. The Promise Program (free tuition) also requires a 2.0 GPA and 67% completion.
- **Important note:** Attending college less than full-time (below 12 units) will reduce the percentage of aid you receive for the year, but will extend the amount of years you will qualify for federal aid. Some programs may require full-time enrollment. If you have more specific questions, please visit our financial aid office [website](#).



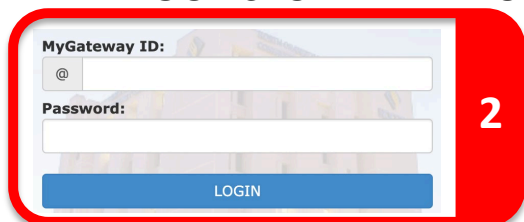


HOW TO VIEW YOUR STUDENT EDUCATIONAL PROGRAM PLAN (SEPP)

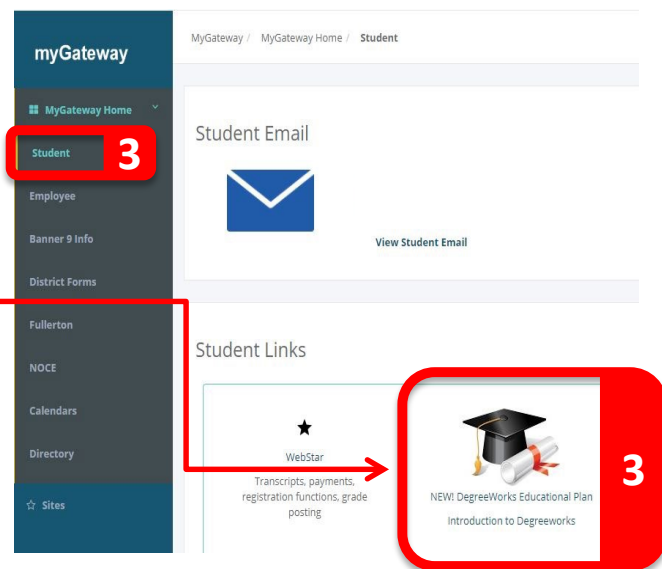
STEP 1: LOG INTO MYGATEWAY FROM THE FULLERTON COLLEGE WEBSITE AT FULLCOLL.EDU



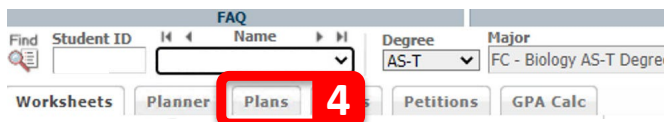
STEP 2: TYPE YOUR STUDENT ID NUMBER AND PASSWORD



STEP 3: CLICK ON THE STUDENT TAB ON THE LEFT THEN CLICK ON THE GRADUATION CAP



STEP 4: CLICK ON THE PLANS TAB TO ACCESS YOUR SEPP



STEP 5: CLICK ON THE VIEW POP DOWN ARROW TO SEE IMPORTANT NOTES THAT MAY BE ON YOUR SEPP





STUDENT EDUCATIONAL PROGRAM PLAN (SEPP)

Sample: Electronic SEPP in [myGateway](#) on DegreeWorks

862-01142020-CSANTANA 📄

Active: Yes

Degree: Associate in Arts Transfer

Status: NOT LOCKED

Level: Fullerton College

Hide all notes

MAJOR: BUS ADMIN AST (CSUF-Management) Went over ADT, CSU GE reqs and created A-SEPP. Submit Course Repeat Adjustment Request to A&R after MATH 40F grade posts. He may also be eligible for ECON AA if he takes PE. Reminded student to submit official OCT from Mt. SAC ASAP. Attend CSU application workshops at Cadena Transfer Center starting summer 2020. Submit CSU application OCT 1-NOV 30. If eligible submit 2 graduation applications by spring 2021 deadline: BUS ADMIN AST & ECON AA (using CSU GE pattern).

Santana, Citlally P | 2020-01-25 10:27:15

Fall 2020, Total Units: 12.0

Critical	Course Requirement	Credits	Notes
	ENGL 100_F	4.0	
	MATH 130_F	4.0	
	BUS 100_F	3.0	
	PE 102_F	1.0	





NORTH ORANGE PROMISE PROGRAM

The North Orange Promise Program provides **FREE** tuition and health fee for eligible full-time students.

ELIGIBILITY REQUIREMENTS:

- First-time college and California resident (or AB 540).
- Maintain full-time enrollment: 12+ units each consecutive semester (15 units recommended to complete/transfer in two years).
- Complete financial aid application (FAFSA or CA Dream Act) & complete the Fullerton College financial aid office next steps. *It's not too late to apply for financial aid!*
- Meet with a counselor to: review Student Educational Program Plan (SEPP), go over academic, career and transfer goals, and create a comprehensive SEPP within the first year.
- Maintain a 2.0 or higher GPA and complete at least 67% of attempted units at Fullerton College.

Visit [Promise.fullcoll.edu](https://promise.fullcoll.edu) to get started!

*The Promise Program is **different** from the California Promise Grant.
For California Promise Grant questions contact the Financial Aid Office.*





CAREER EDUCATION

Career Education (formerly called Career Technical Education) refers to classes and programs that provide hands-on training while building the comprehensive skillsets needed for success in the jobs of today and well into the future.

If you took any Career Education classes in high school and/or through R.O.P. (Regional Occupational Program) you may be eligible to receive college credit toward our Career Education programs. Examples of these programs are Accounting, Automotive Technology, Biotechnology, Business, Child Development, Construction, Computer Science, Criminal Justice, Photography, and Drafting.

Please alert your Counselor if you have taken any Career Education classes.

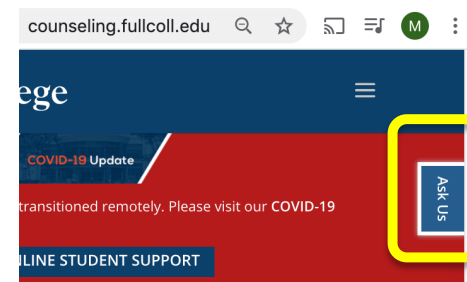




COUNSELING CENTER SERVICES

Please contact the Counseling Center for the services below:

- **Counseling appointments** are for career or educational planning and are available throughout the year at the Counseling Center. The best time to see a counselor: September, October, February and March. Counseling appointments may be self-scheduled at counseling.fullcoll.edu
- **General Information (GI)** 5-10 minutes counseling for quick questions and prerequisite clearances. Can be online or phone or walk in when available (post Coronavirus). **No appointment needed.**
- **e-Advising** is for general questions which do not require review of documents. **No appointment needed.**
- **Online Chat** chat with a live person online to get assistance with general questions or schedule a counseling appointment



Counseling Center: (714) 992-7084. For [hours of operation](#) visit the counseling center [website](#)





TIPS AND THINGS TO DO

- Fill out your Free Application for Federal Student Aid (FAFSA) at www.fafsa.ed.gov or for AB540 Students the California Dream Act Application at dream.csac.ca.gov/
- You may qualify for California College Promise Grant (CCPG) via your FAFSA which exclusively covers your \$46 per unit cost, student is responsible for all other fees.
- Locate your registration appointment in MyGateway account, it is also emailed to you by Admissions and Records.
- Be aware of [waitlist procedures](#) when registering for classes. Use fullcoll.edu/directory/ to locate instructors to ask to attend the first class meeting (attendance may be online), if space is available the instructor may give you an add code at the first class meeting.
- Pay your fees as soon as possible. Financial Aid and Promise Program student fees are covered (be aware that fees may show but will be covered by your specific program).
- Attend your first class sessions ON TIME to avoid being dropped from the class (attendance likely to be online for most classes). Be aware that remotely taught classes are online but are conducted at the times and dates noted for the class. If it is a traditional online class or hybrid class then you see TBA noted which means the times the class meets are To Be Arranged by the student.
- It is the student's responsibility to drop classes they do not attend.
- Take advantage of [services/programs](#) (click blue link to see online services and programs)





HOW TO REGISTER ONLINE FOR CLASSES

STEP 1: LOG INTO MYGATEWAY FROM THE FULLERTON COLLEGE WEBSITE AT FULLCOLL.EDU

STEP 2: LOG INTO MYGATEWAY WITH YOUR STUDENT ID NUMBER, PASSWORD, AND YOUR ONE-TIME PASSWORD (OTP)

STEP 3: UNDER "REGISTRATION TOOLS" CLICK THE HYPERLINK TITLED "ADD OR DROP CLASSES OR..."

STEP 4: HIGHLIGHT "CYPRESS COLLEGE/FULLERTON COLLEGE" AND CLICK THE SUBMIT BUTTON

STEP 5: ANSWER A SERIES OF PROMPT QUESTIONS TO HELP THE COLLEGE WITH THEIR DATA

STEP 6: TYPE IN YOUR 5-DIGIT COURSE REGISTRATION NUMBERS UNDER "CRNS"

STEP 7: CLICK ON "CONFIRM YOUR CHOICES"

STEP 8: CLICK ON "COMPLETE REGISTRATION"

STEP 9: PAY YOUR FEES – IF YOU QUALIFY FOR THE CALIFORNIA PROMISE GRANT AND/OR THE NORTH ORANGE PROMISE PROGRAM THEN YOUR \$46 DOLLARS PER UNIT COST IS COVERED. MOST, BUT NOT ALL FEES ARE COVERED. STUDENTS ARE RESPONSIBLE FOR COVERING THE REMAINING FEES.

1

2

3

4

6

7

8





Fullerton College
Excellence. Elevated.

THANK YOU FOR CHOOSING FULLERTON COLLEGE

